



18/22-28 Premier Street Gymea, NSW 3 2 2

Lifestyle opportunity

Access is from 87 Manchester Road, Gymea

Ideally positioned next to a large parkland and just a few minutes stroll from Gymea train station and vibrant village living. This contemporary townhouse is perfect for those seeking a relaxed low maintenance lifestyle. Also known as 18/87 Manchester Rd and must be entered via gate at Manchester Road, set privately to the rear of peaceful dual street access complex.

Price: Contact Agent
Council Rates: \$352.55 p/q
Water Rates: \$271.47 p/q



Lora Moore

0418 455 050

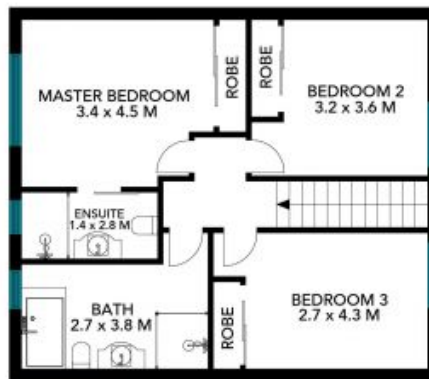


Gerard Foote

0433 421 333



Ground Floor



First Floor



18/22-28 Premier Street
Gymea



Ground Floor



First Floor



The floor plan is not to scale; measurements are indicative and in metres. All features included in this 3D plan are for inspiration purposes only. This is not an exact replica of the property or the position of exterior elements. Plans should not be relied on. Interested parties should make and rely on their own enquiries.