



70 Giribil Track Bucketty, NSW

3

1

1

Bushland Paradise!

Nestled in a natural bushland setting sits this modern family home. Set on 26.2 spacious acres in the Central Coast hinterland, at the gateway to the gorgeous Wollombi Valley, this is the perfect place to escape the hustle and bustle of city life.

Price:

New to Market



Shaun Coffey

0417400556



Scott Wall

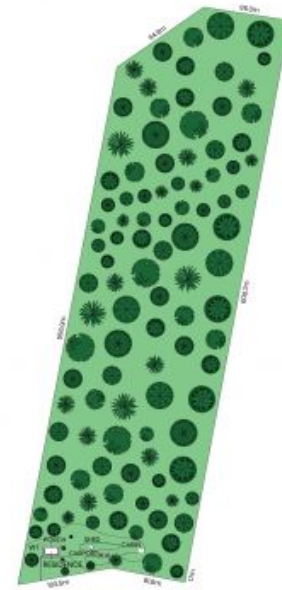
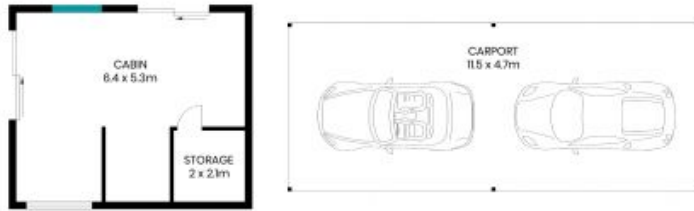
0413 965 616

70 Giribil Track
Bucketty



The floor plan is not to scale; measurements are indicative and in metres. All features included in this 3D plan are for inspiration purposes only. This is not an exact replica of the property or the position of exterior elements. Plans should not be relied on. Interested parties should make and rely on their own enquiries.

70 Giribil Track
Bucketty



Internal Area: 110sqm
Land Area: 106,200sqm



The site plan and floor plan are not to scale; measurements are indicative and in metres. Bushes and trees are placed for illustration purposes. Plans should not be relied on. Interested parties should make and rely on their own enquiries. All other information provided has been collected from reliable sources but cannot be guaranteed for accuracy.