

1/55 Doomben Avenue Eastwood, NSW 2 1 1

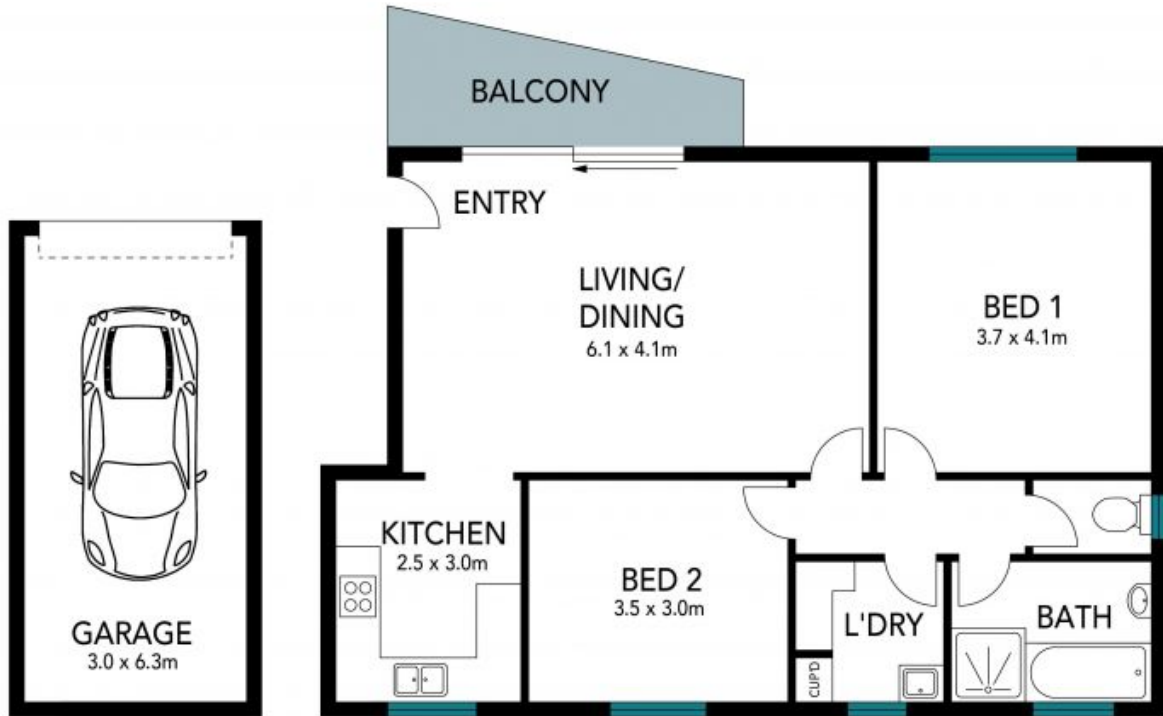
Effortless apartment living in the heart of Eastwood

Positioned for lifestyle and scaled for ease, this updated first floor apartment offers remarkable proportions in an exhilarating location just metres from Eastwood shops, dining and transport precinct. At its heart lies a well-planned layout with ideal separation of living and accommodation, finished with recent enhancements and ready to enjoy, for all lifestyle enthusiasts seeking walk-to-everywhere convenience.

Price: Contact Agent
Council Rates: \$322.00 p/q
Water Rates: \$153.89 p/q
Strata Rates: \$800.83 p/q



Jeff Jianfu Luo
0425 286 668



The floor plan is not to scale; measurements are indicative and in metres. Exterior elements are not in position. Plans should not be relied on. Interested parties should make and rely on their own enquiries.



1/55 Doomben Avenue, Eastwood

