



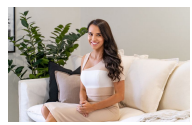
17 National Avenue Shell Cove, NSW 3 2 2

### Contemporary design in a popular enclave

Optimising space and light, this townhome is positioned within a small boutique complex and is defined by its grand proportions, well appointed interiors and connection to the natural surrounds. Peacefully located within a small collection of designer homes, close to high quality schooling and within easy reach of the iconic Killalea State Park and popular The Links Shell Cove Golf Club and the Shell Cove Marina.

- Spacious interiors with open plan entertainers' level enjoying unanimous access to the back yard
- Featuring high ceilings, neutral interiors and quality finishes throughout
- Deluxe stone kitchen with stainless appliances, gas cooking and breakfast bar
- Light-filled bedrooms all featuring built-in wardrobes, main boasts an ensuite
- Large contemporary bathroom with freestanding bath, floor-to-ceiling tiles
- Double garage, easy side access to private landscaped yard and solar panels
- Multiple A/C units throughout, internal laundry with third W/C downstairs
- Quietly positioned a short stroll from Shell Cove Public School, The Farm

**Price:** \$695 per week  
**Bond:** \$2,780  
**Available Date:** 17/05/2022



**Jessika Welsh**  
0401 566 714



**Kylie Davis**  
02 4228 1622