



38A/2 Brady Street Mosman, NSW

3 

2 

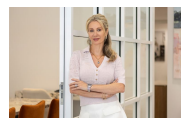
2 

Penthouse perfection, north facing sanctuary

Expressions of Interest Close Saturday 4th June 2022

Price:

Contact Agent

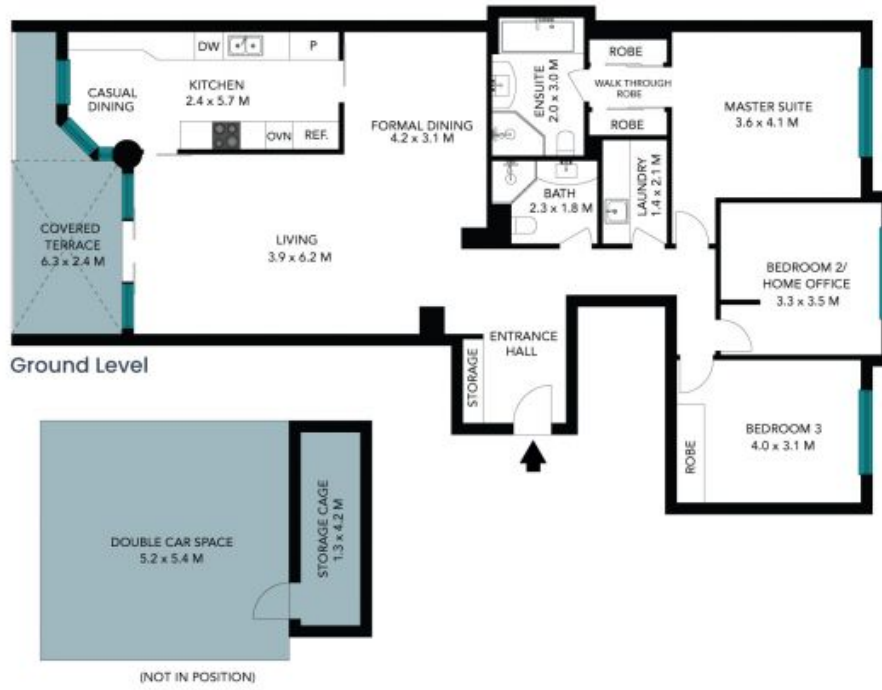


Marize Bellomo

0414 972 203

38A/2 Brady Street
Mosman

STONE



Internal living plus balcony: 135 sqm
Parking and storage: 36 sqm

The floor plan is not to scale, measurements are indicative and in metres. Certain elements are not in position. Plans should not be relied on. Interested parties should make and rely on their own enquiries. All other information provided has been collected from reliable sources but cannot be guaranteed for accuracy.



38A/2 Brady Street
Mosman

STONE



Ground Level

Internal Living plus balcony: 135 sqm
Parking and storage: 36 sqm



The floor plan is not to scale; measurements are indicative and in metres. All features included in this 3D plan are for inspiration purposes only. This is not an exact replica of the property or the position of exterior elements. Plans should not be relied on. Interested parties should make and rely on their own enquiries.