

18 Burgess Street Beverley Park, NSW 3 2 2

Outstanding Redevelopment Opportunity on 832m2

Make no mistake this run-down property needs major renovation work or a complete rebuild, but with a peaceful Beverley Park address and a generous 832sqm block of land, it presents a rare opportunity with many possibilities. This virtual blank canvas is now ready for some inspiration and creativity to bring it back to life and capitalise on such a beautifully quiet street position. It offers tremendous scope to upgrade or completely knockdown for duplexes or your dream home STCA. Start again to take full advantage of its great location close to the golf course and walking distance to shops and cafes along Rocky Point Road.

Price: SOLD \$2,800,000 | Ray Fadel
Council Rates: \$506.00 p/q
Water Rates: \$155.00 p/q

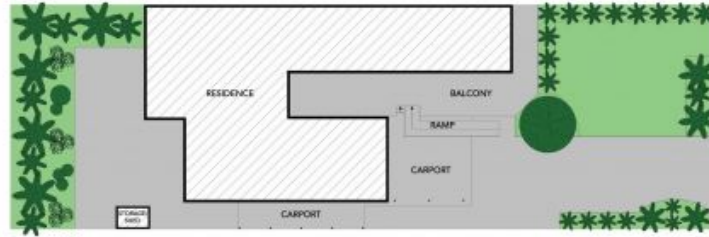


Ray Fadel
0413 177 739



Shaun Ramani
0417 444 919

18 Burgess Street
Beverley Park



SITE PLAN



The site plan and floor plan are not to scale; measurements are indicative and in metres. Bushes and trees are placed for illustration purposes. Plans should not be relied on. Interested parties should make and rely on their own enquiries. All other information provided has been collected from reliable sources but cannot be guaranteed for accuracy.

18 Burgess Street
Beverley Park

STONE



The floor plan is not to scale; measurements are indicative and in metres. All features included in this 3D plan are for inspiration purposes only. This is not an exact replica of the property or the position of exterior elements. Plans should not be relied on. Interested parties should make and rely on their own enquiries.