



102/8 Koorala Street Manly Vale, NSW 2 2 1

5-star luxury resort lifestyle in key location

Placed on the top floor of the resort-like 'Peninsula' security complex with a north aspect and tranquil leaf outlooks, this phenomenal executive apartment delivers the ultimate luxury lifestyle package. Exceptionally bright and spacious, refreshingly modern and extending to a giant covered north facing terrace screened by the crowning fronds of the adjoining palm trees, it is only footsteps from Coles supermarket and B-Line city buses and minutes to beaches and the city.

Price: \$1,255,000



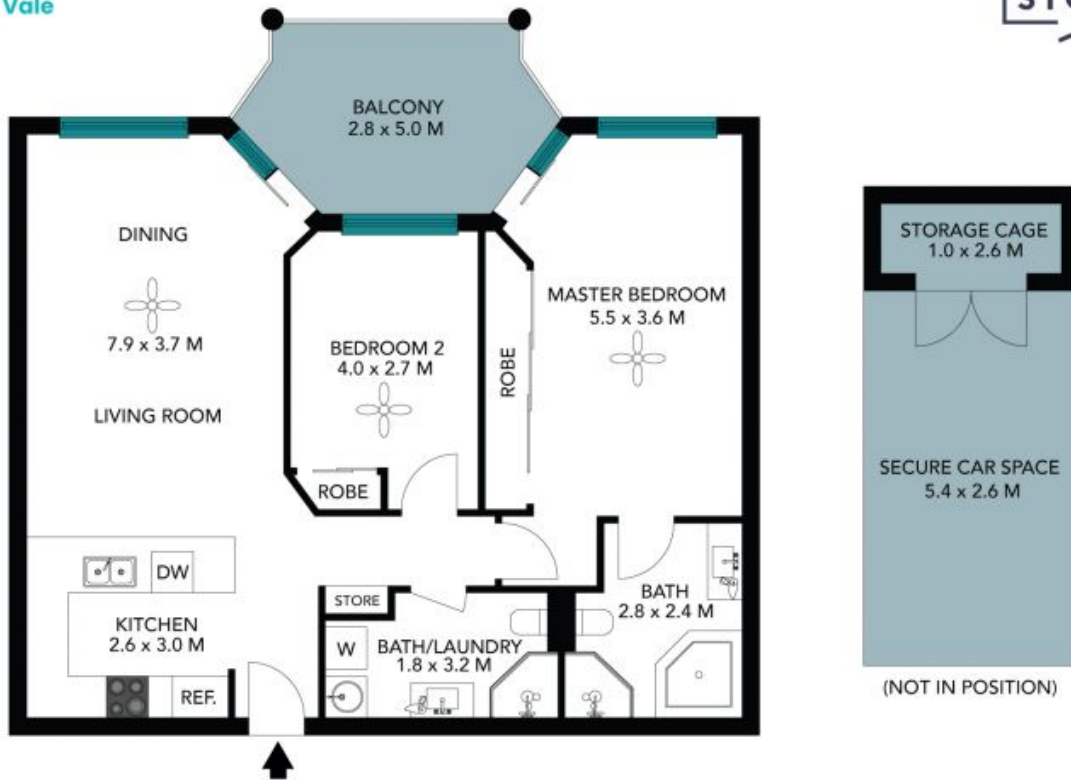
Eddy Piddington
0414 333 907



Lachlan Phillips
0481 007 320

102/8 Koorala Street
Manly Vale

STONE



The floor plan is not to scale, measurements are indicative and in metres. Certain elements are not in position. Plans should not be relied on. Interested parties should make and rely on their own enquiries. All other information provided has been collected from reliable sources but cannot be guaranteed for accuracy.

102/8 Koorala Street
Manly Vale



The floor plan is not to scale; measurements are indicative and in metres. All features included in this 3D plan are for inspiration purposes only. This is not an exact replica of the property or the position of exterior elements. Plans should not be relied on. Interested parties should make and rely on their own enquiries.