



611/3 Rockdale Plaza Drive Rockdale, NSW



Sun-soaked resort living

Inspect to fully appreciate why units in the Rockdale Plaza Apartments complex are among the area's most sought-after.

Price: Contact Agent
Council Rates: \$262.00 p/q
Water Rates: \$155.00 p/q
Strata Rates: \$1,392.00 p/q



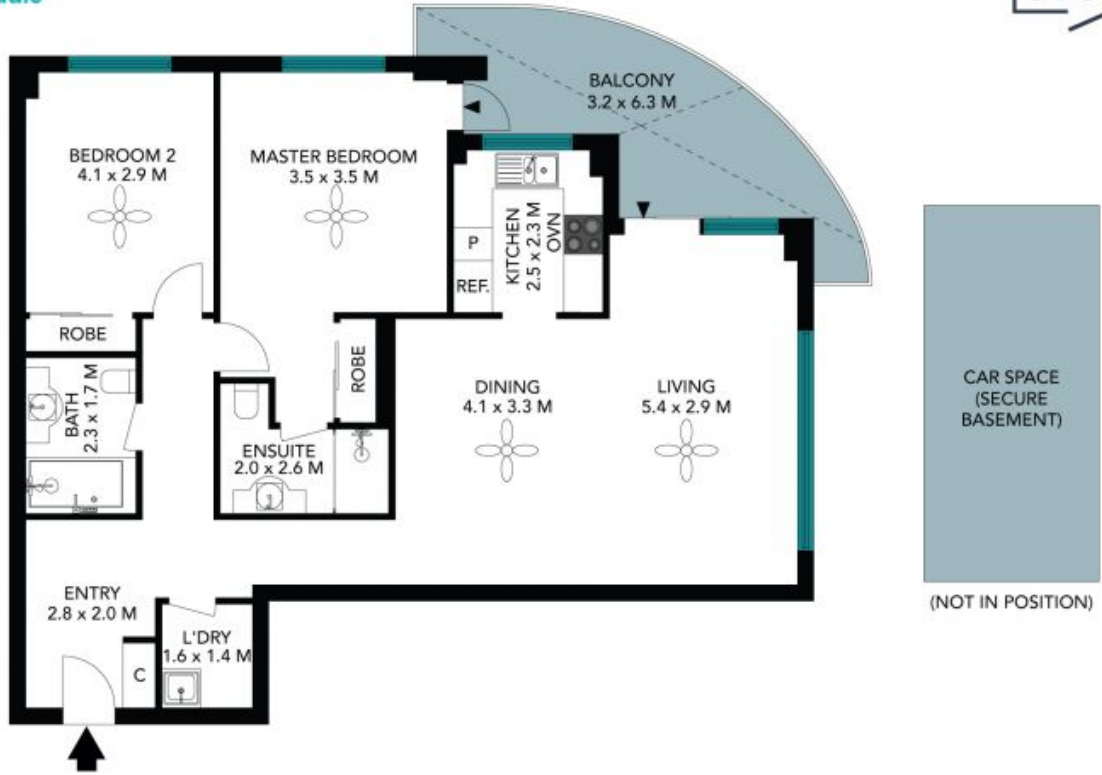
George Kambouroglou

0422 421 111



Tanios Azzi

0412 772 369



The floor plan is not to scale, measurements are indicative and in metres. Exterior elements are not in position. Plans should not be relied on. Interested parties should make and rely on their own enquiries. All other information provided has been collected from reliable sources but cannot be guaranteed for accuracy.

611/3 Rockdale Plaza
Rockdale

STONE



The floor plan is not to scale; measurements are indicative and in metres. All features included in this 3D plan are for inspiration purposes only. This is not an exact replica of the property or the position of exterior elements. Plans should not be relied on. Interested parties should make and rely on their own enquiries.