

14/16 Maxim Street West Ryde, NSW



Conveniently Located

This bright and cozy one bedroom, first floor apartment offers updated interiors with freshly painted walls and new floating floorboards throughout. Conveniently located a stone's throw from West Ryde Station, public buses, local TAFE, schools, shops and numerous restaurants/cafes.

Price:

Contact Agent



Justin Spencer

0436 000 991



Adam Denina

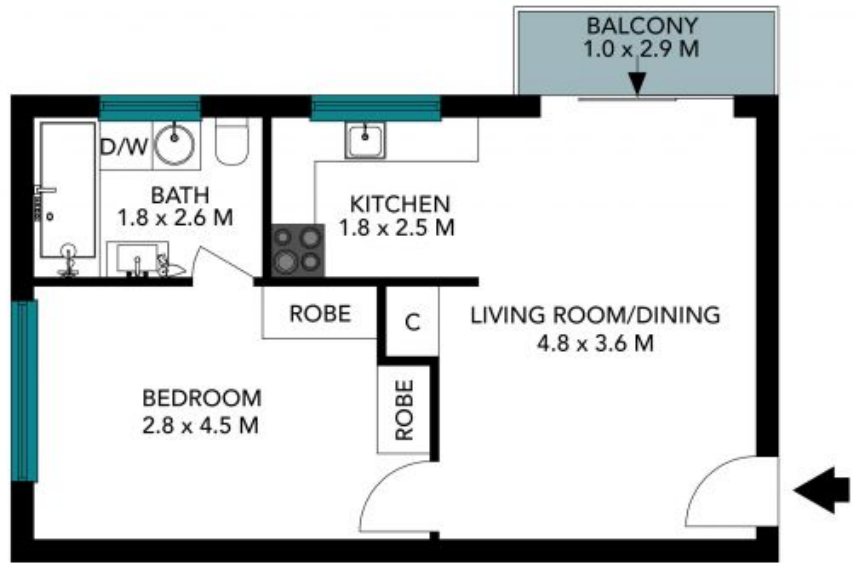
0413 546 713

14/16 Maxim St
West Ryde

STONE



(NOT IN POSITION)



The floor plan is not to scale, measurements are indicative and in metres. Detail elements are not in position. Plans should not be relied on. Interested parties should make and rely on their own enquiries. All other information provided has been collected from reliable sources but cannot be guaranteed for accuracy.

14/16 Maxim St
West Ryde

STONE



The floor plan is not to scale; measurements are indicative and in metres. All features included in this 3D plan are for inspiration purposes only. This is not an exact replica of the property or the position of exterior elements. Plans should not be relied on. Interested parties should make and rely on their own enquiries.