



10 Conlan Street Bligh Park, NSW

3

1

2

Perfect Location

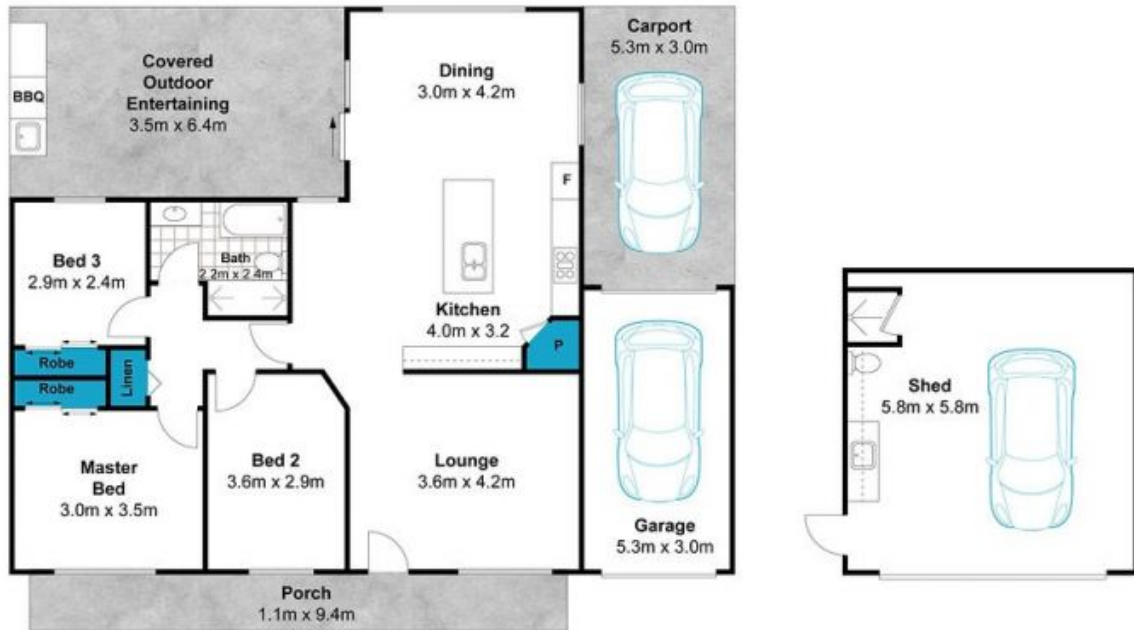
Positioned behind a private upmarket fence and hedge is a quality property that we can't wait to show you, with vehicle access to the rear and a great double man shed complete with bathroom facilities

Price:

Just Listed

Stone Real Estate -

Head Office



Every attempt has been made to ensure the accuracy of this floorplan, however, plans are for marketing purposes only. All dimensions are approximate and not to scale, they are subject to errors and inaccuracies.

10 Conlan Street, Bligh Park