



28 Green Crescent Shell Cove, NSW

4 3 2

### Grand proportions in an ultra-convenient position

Set for the ever growing family, this beautiful home combines size, comfort and versatility and is perfect for year round entertaining. An ideal place for your family to grow, this double storey layout is inviting and light-filled throughout. This sunny retreat is on an easy to manage block in a quiet street, a stroll to village shops, Shell Cove Marina, beaches and The Links Golf Course and Tavern.

**Price:** \$795 per week  
**Bond:** \$3,180  
**Available Date:** 14/06/2022



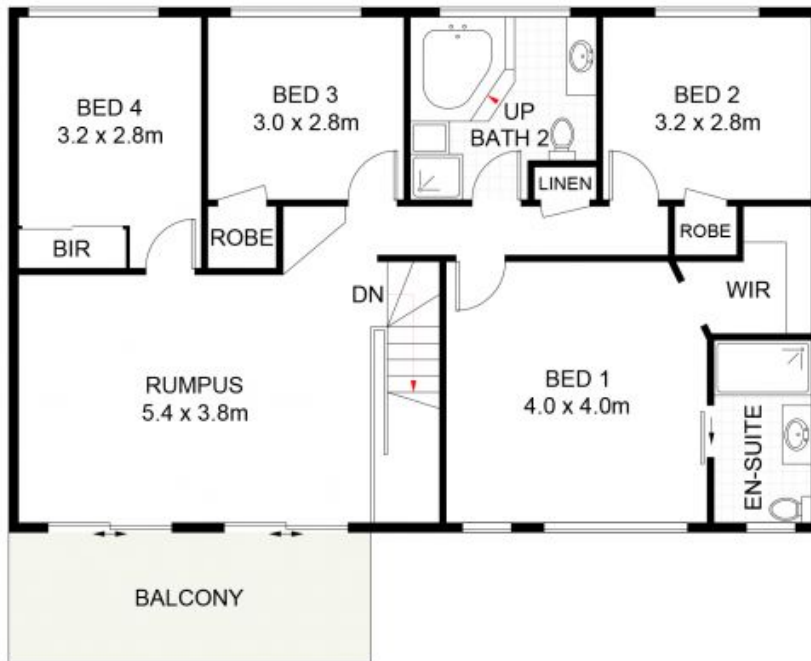
**Darnell Haselau**

0426 400 240

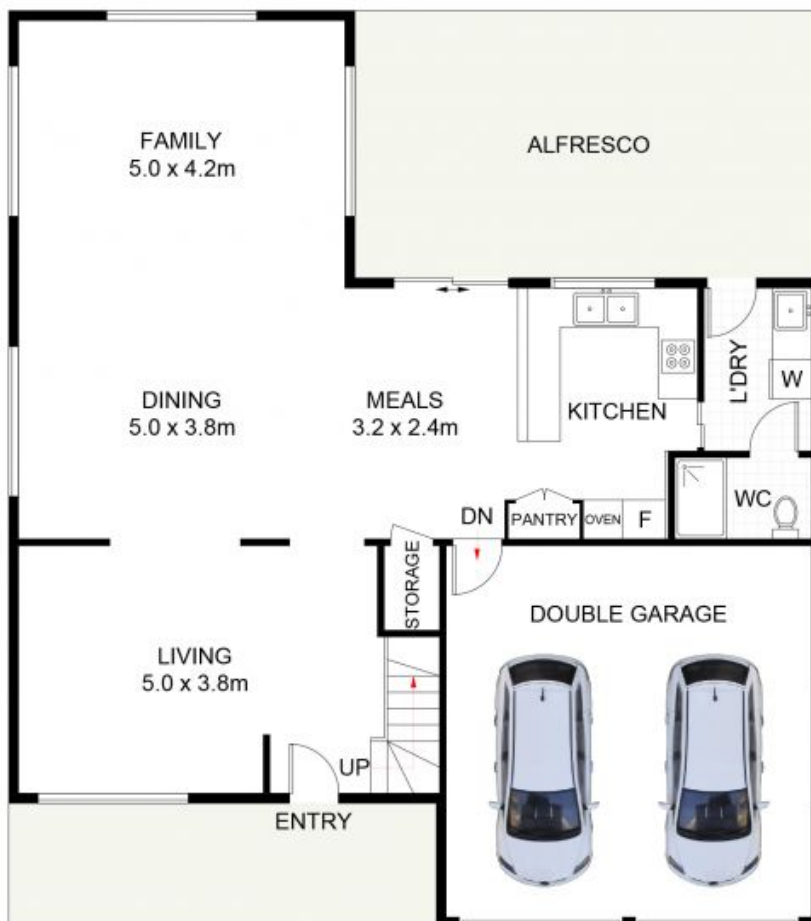


**Selina Robinson**

0421 396 635



**FIRST FLOOR**



**GROUND FLOOR**



## 28 Green Crescent, Shell Cove

Approximate Gross Internal Area = 220 sq m (Including Double Garage)

Scale in metres. Indicative only. Dimensions are approximate. All information contained herein is gathered from sources

we believe to be reliable. However, we cannot guarantee its accuracy and interested persons should rely on their own enquiries. Some images may contain digital furniture.