



602/8 Birdwood Avenue Lane Cove, NSW



Superb modern penthouse defining urban luxury

Encircled by stunning bushland and framed by landscaped gardens, this luxury residence enjoys a penthouse position within the prestigious Bates Smart 'Quartet' development. A bespoke sanctuary with sleek custom finishes and a soothing organic palette, this exquisite apartment offers an exceptional lifestyle or investment opportunity within a sought-after, cosmopolitan village setting.

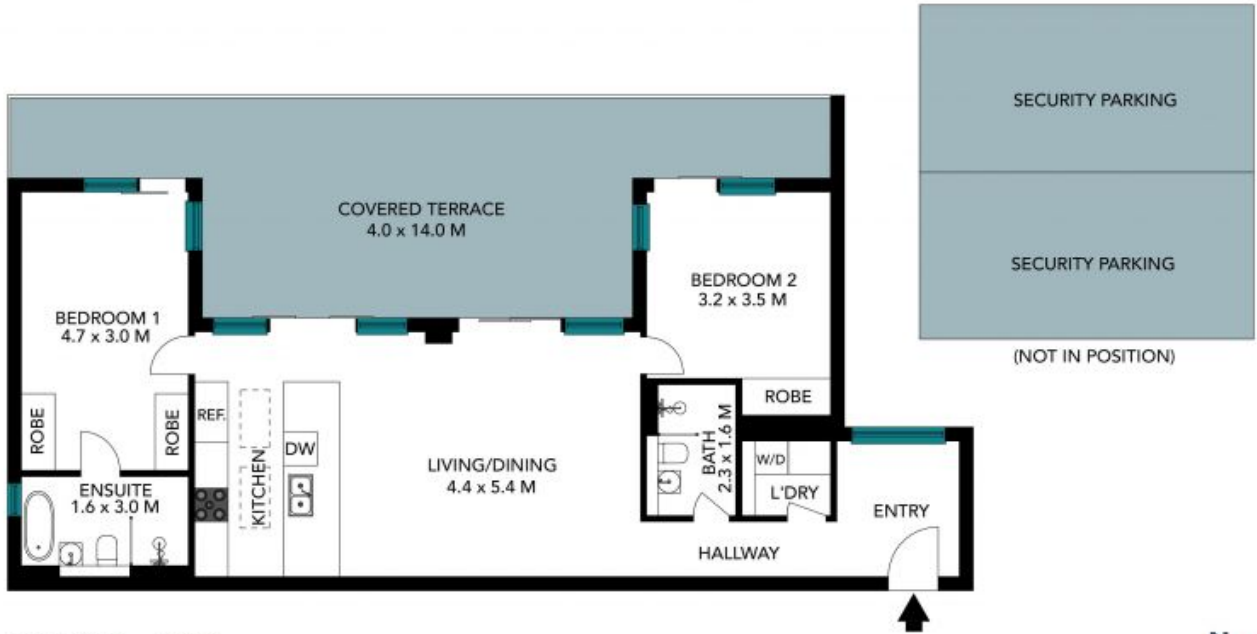
Water Rates: \$149.35 p/q

Strata Rates: \$1,272.45 p/q



Maria Cassarino

0411 818 093



Internal Living: 99 sqm
External Living: 41 sqm
Total Living Area: 140 sqm

The floor plan is not to scale, measurements are indicative and in metres. Exterior elements are not in position. Plans should not be relied on. Interested parties should make and rely on their own enquiries. All other information provided has been collected from reliable sources but cannot be guaranteed for accuracy.

602/8 Birdwood Ave
Lane Cove

STONE



Internal Living: 99 sqm
External Living: 41 sqm
Total Living Area: 140 sqm

The floor plan is not to scale; measurements are indicative and in metres. All features included in this 3D plan are for inspiration purposes only. This is not an exact replica of the property or the position of exterior elements. Plans should not be relied on. Interested parties should make and rely on their own enquiries.