



53 Lamorna Avenue Beecroft, NSW

4

3

2

Large Family home on 1144sqm with potential to subdivide (STCA)

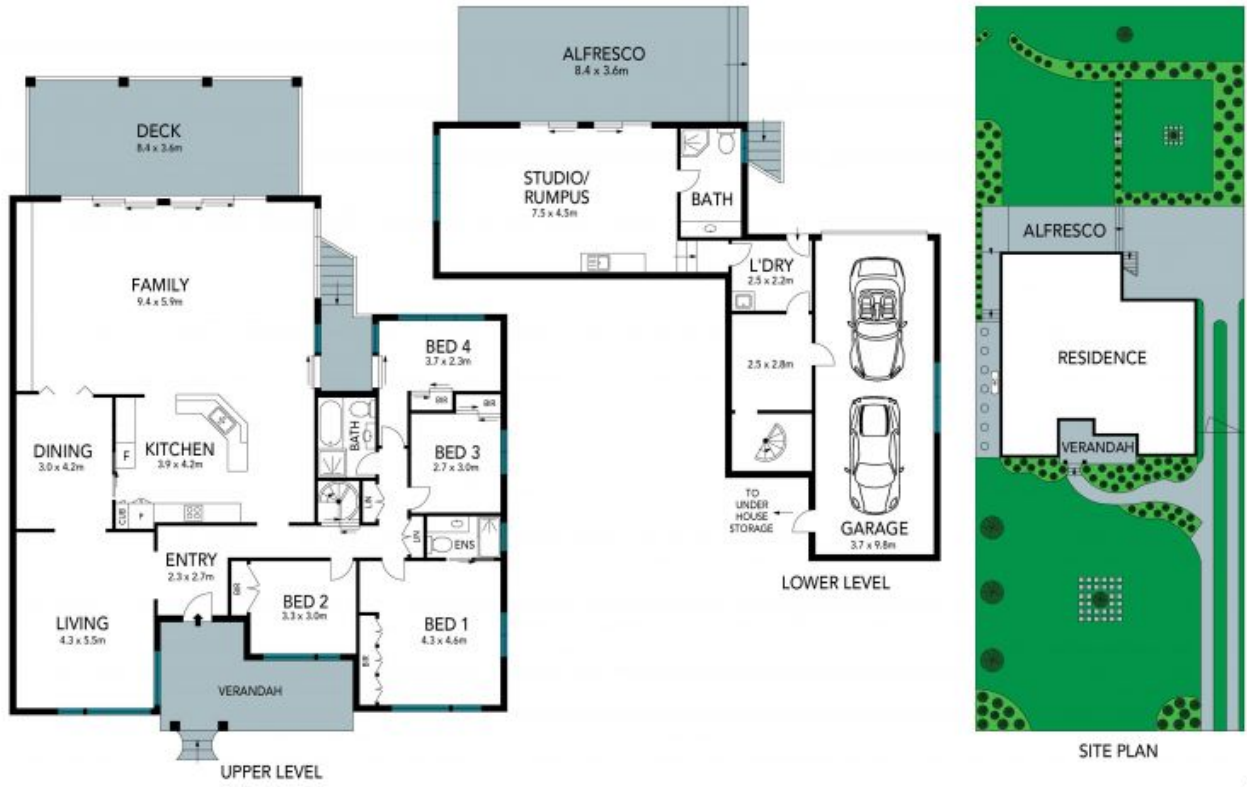
Commanding a striking presence over a substantial 1,144 m² landholding, this stylish family sanctuary radiates space and versatility for every generation. At its rear lies verdant green bushland that frames two expansive open levels, offering serene and secluded indoor-outdoor entertaining, as well as the rare advantage of future subdivision potential (STCA) in a highly coveted lifestyle location.

Price: Auction
Council Rates: \$536.90 p/q



Jeff Jianfu Luo

0425 286 668



The floor plan is not to scale; measurements are indicative and in metres. Exterior elements are not in position. Plans should not be relied on. Interested parties should make and rely on their own enquiries.



53 Lamorna Avenue, Beecroft

