

8 Darwin Street Aspley, QLD



Architecturally designed lowset home

If you are looking for a lowset that has space for 4 cars, a caravan, tinny and more, then look no further! Boasting an abundance of space with soaring ceilings, this architecturally designed home offers crisp lines and fluid flowing living spaces. This Richard Neutra era home is truly unique and just seconds to local schools, transport and more.

- Immaculately renovated home
- Freshly painted interior
- Plush new carpets
- Split-system air-conditioning
- NBN connected
- Gas hot water system
- Low maintenance yard
- Town gas connected

Price: Offers over \$749,000

Council Rates: \$382.48 p/q



Tristan Rowland

0411 572 970



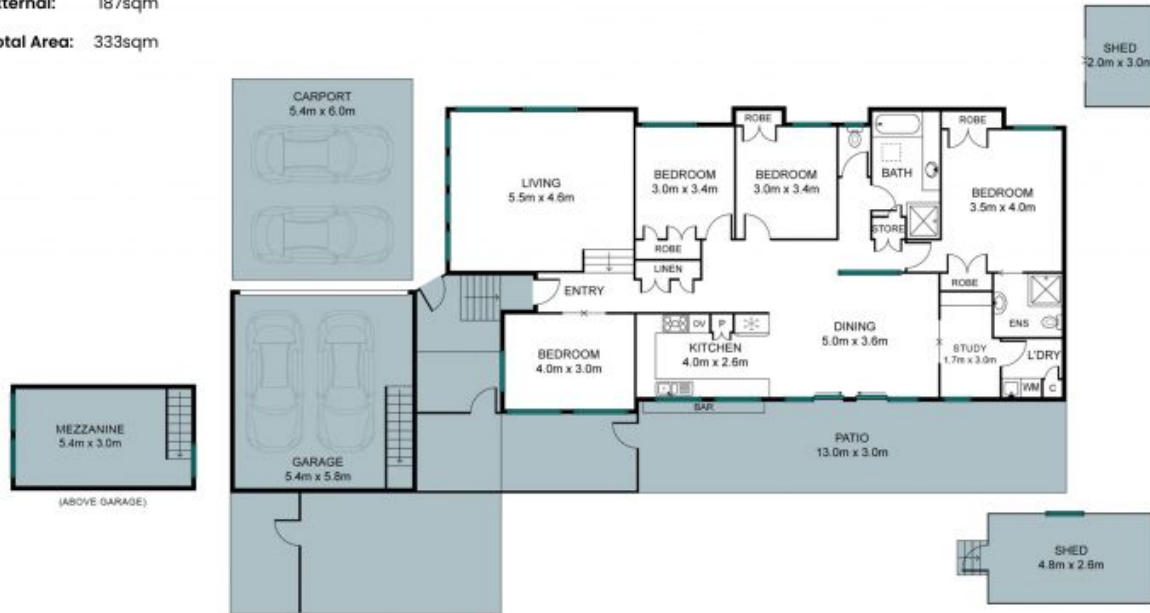
Thomas Young

0437 486 283

Internal: 146sqm

External: 187sqm

Total Area: 333sqm



The site plan and floorplan are not to scale; measurements are indicative and in metres. Bushes and trees are placed for illustration purposes. Plans should not be relied on. Interested parties should make and rely on their own enquiries.

8 Darwin Street, Aspley

stoneaspley.com.au