



17 Cassandra Crescent Heathcote, NSW 4 2 2

Tranquil Outlook

Growing families and upsizers, looking to move into a flexible and well-proportioned home in a quiet leafy setting, will be impressed by this large multi-level residence. Tastefully presented throughout and filled with natural light, it offers a very user-friendly home with a great entertainer's layout and a 562.8sqm block of land that backs directly onto a nature reserve.

Price: Contact agent
Council Rates: \$427.71 p/q
Water Rates: \$254.08 p/q



Rhys Christofa

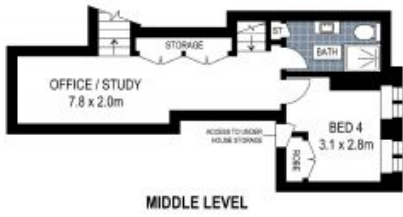
0415 684 877



Ezra Malolo

0401 490 024

17 Cassandra Crescent
Heathcote



The site plan and floor plan are not to scale; measurements are indicative and in metres. Bushes and trees are placed for illustration purposes. Plans should not be relied on. Interested parties should make and rely on their own enquiries. All other information provided has been collected from reliable sources but cannot be guaranteed for accuracy.