



20B Telopea Street Telopea, NSW

3

3

2

### Perfect lifestyle investment in Carlingford West Public catchment

With its quality build, generosity of space and central location, this double brick duplex is a perfect choice for young families and investors alike. It offers substantial proportions over two levels with valuable scope to enhance if desired, and capitalise on the many advantages of its convenient address that's zoned for Carlingford West Public, and merely moments from The King's, Tara, St Bernadette's, St Patrick's and other notable schools.

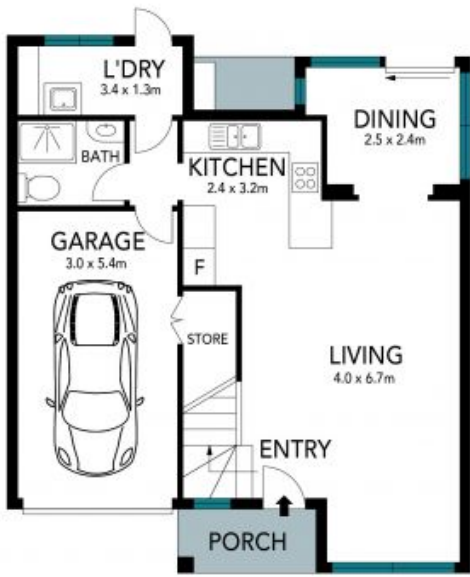
Price:

For sale \$1,150,000 - \$1,250,000



**Jeff Jianfu Luo**

0425 286 668




GROUND FLOOR



FIRST FLOOR



SITE PLAN

The floor plan is not to scale; measurements are indicative and in metres. Exterior elements are not in position. Plans should not be relied on. Interested parties should make and rely on their own enquiries. 

20B Teloopa Street, Teloopa

