



8/33-37 Ethel Street Seaforth, NSW



### Luxurious executive garden apartment next to the village

Defined by its overly generous interiors, sleek contemporary finishes and extensive alfresco entertaining areas, this magnificent garden apartment is the ultimate lifestyle retreat for executive entertainers or downsizers. Set within the exclusive 'Tahani' security building with level access, it is superbly located within footsteps of Seaforth village and city buses.

**Price:** Deposit taken

**Available Date:** 06/08/2022



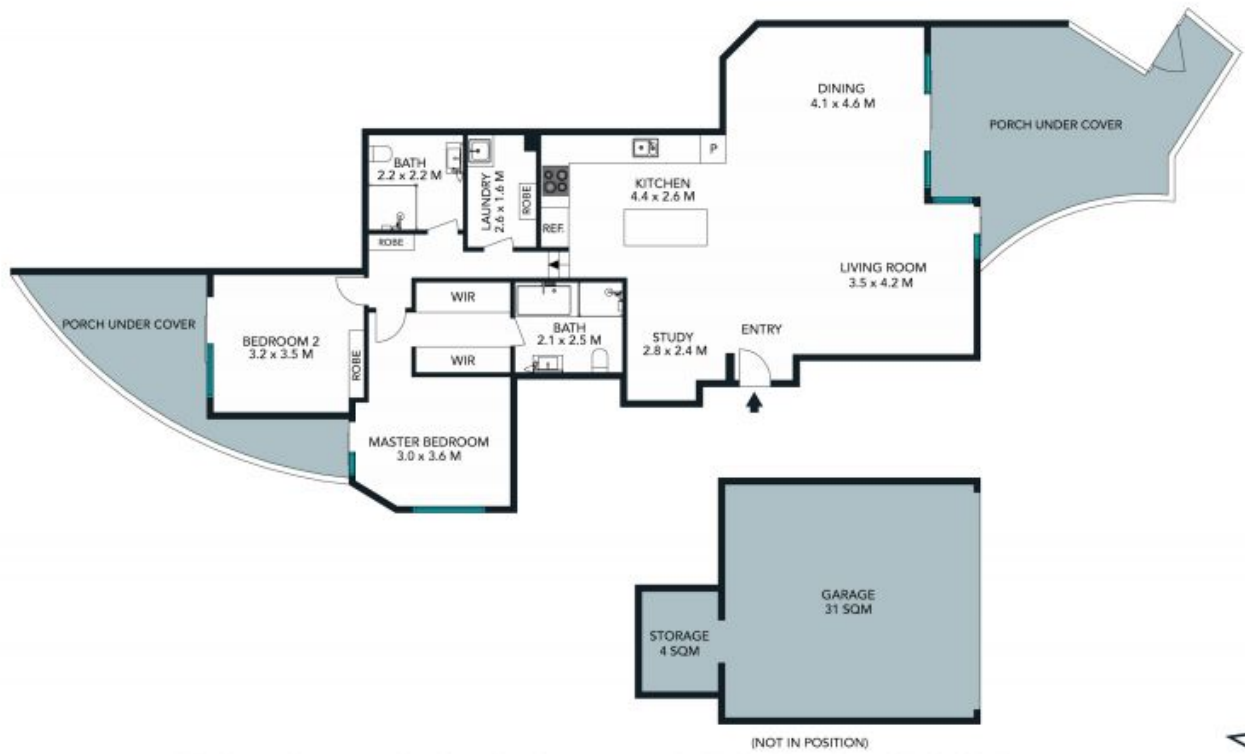
**Sarah Cass**

0478 086 411



**Livi Hunt**

0420 466 538



The floor plan is not to scale; measurements are indicative and in metres. Exterior elements are not in position. Plans should not be relied on. Interested parties should make and rely on their own enquiries.



8/33 Ethel Street, Seaforth  
[stonerealestate.com.au](http://stonerealestate.com.au)

Produced by DIAKRIT



The floor plan is not to scale; measurements are indicative and in metres. All features included in this 3D plan are for inspiration purposes only. This is not an exact replica of the property or the position of exterior elements. Plans should not be relied on. Interested parties should make and rely on their own enquiries.

8/33 Ethel Street, Seaforth  
stonerealestate.com.au

Produced by DIAKRIT