



60A Anzac Avenue Engadine, NSW



Contemporary duplex promises convenient living

Combining contemporary inclusions and low maintenance living, this brand new duplex residence delivers a flowing layout that consists of a generous open plan arrangement and easycare outdoor setting. It presents light filled interiors throughout, enhanced by a sun soaked northerly aspect. Conveniently positioned, the home is within walking distance of Anzac Oval and Engadine Public School.

Price: \$1,475,000



Rhys Christofa

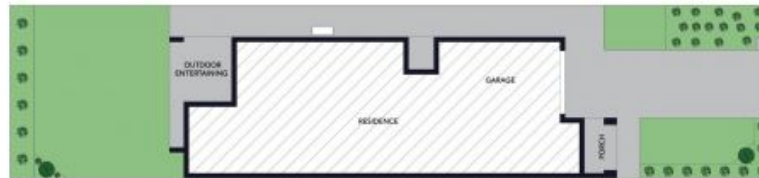
0415 684 877



Lisa Hale

0417 418 250

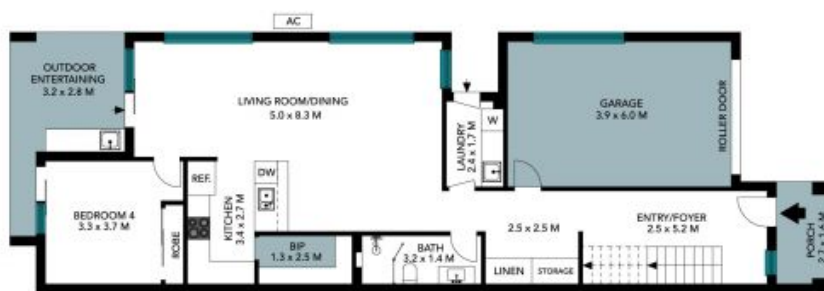
60A Anzac Avenue
Engadine



SITE PLAN



First Floor



Ground Floor



The site plan and floor plan are not to scale; measurements are indicative and in metres. Bushes and trees are placed for illustration purposes. Plans should not be relied on. Interested parties should make and rely on their own enquiries. All other information provided has been collected from reliable sources but cannot be guaranteed for accuracy.

60A Anzac Avenue
Engadine

STONE



The floor plan is not to scale; measurements are indicative and in metres. All features included in this 3D plan are for inspiration purposes only. This is not an exact replica of the property or the position of exterior elements. Plans should not be relied on. Interested parties should make and rely on their own enquiries.