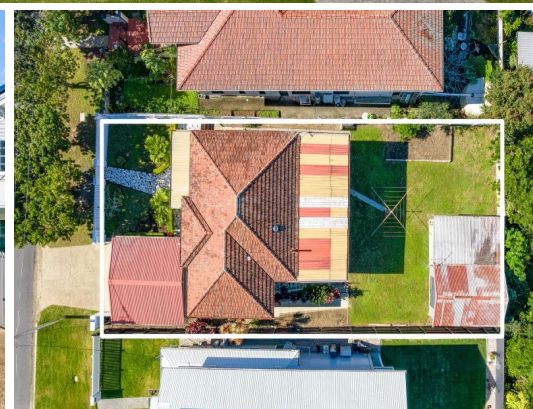




View from 7m



10 Highcrest Avenue Wavell Heights, QLD

3 

1 

2 

Trophy home site | Wavell's best address

Situated on the city side of Wavell Heights' most coveted street with panoramic city and mountain views just calling for a trophy home to be constructed, this top tier block has a ready to rent home or simply bowl over and start building tomorrow with no tenants currently in place. With a pedigree like no other with #12 Highcrest shattering the suburb record for Wavell Heights, this site is in great company surrounded by top tier homes.

- Nestled on a sizable 625sqm block in one of Wavell's premier streets
- Stunning city views from the top-level
- Large flexible floorplan
- Close to schools, shops and cafes
- Public transport close by
- Town gas connected
- NBN ready
- North/South facing aspect

Price:

For Sale Now



Tristan Rowland

0411 572 970



Thomas Young

0437 486 283

Internal: 175sqm

External: 119sqm

Total Area: 294sqm



Level 1

Level 2

The site plan and floorplan are not to scale; measurements are indicative and in metres. Bushes and trees are placed for illustration purposes. Plans should not be relied on. Interested parties should make and rely on their own enquiries.

10 Highcrest Avenue, Wavell Heights

stoneaspaley.com.au