

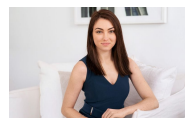


1.304/18 Hannah Street Beecroft, NSW 1  1  1 

### Luxury Apartment in ultra convenient location

This modern and spacious apartment in the 'Beecroft Place' residence is located in the heart of Beecroft, where its sought-after position is literally moments from schools, shops, cafes, restaurants, city buses and Beecroft Station.

**Price:** Deposit Taken  
**Available Date:** 22/07/2022



**Sarah Hastings**

02 8893 2218



The floor plan is not to scale; measurements are indicative and in metres. Exterior elements are not in position. Plans should not be relied on. Interested parties should make and rely on their own enquiries.

1.304/18 Hannah Street, Beecroft

STONE