



26/1317-1321 Princes Highway Heathcote, NSW



Stylish living

Ultra-sleek in design with a generous flowing floorplan, this top floor apartment is nestled at the rear of the well maintained 'Bungalow' complex and is conveniently located a short walk from Heathcote train station, shopping centre and bus routes

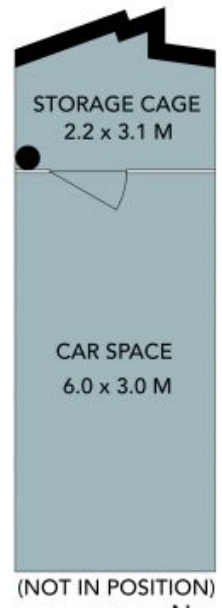
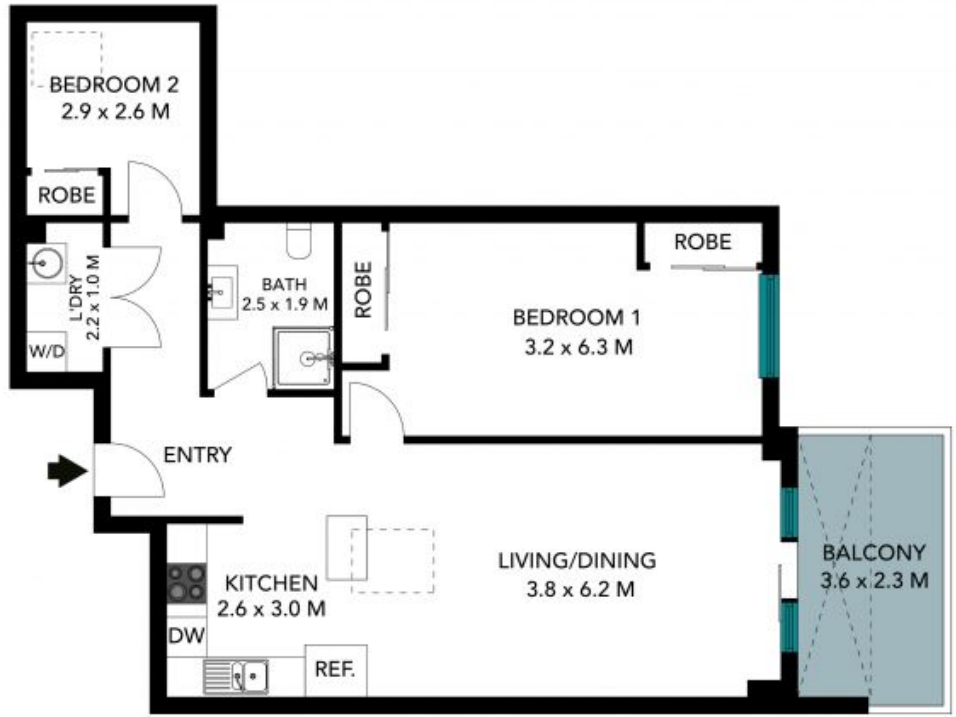
Price: \$500 per week

Available Date: 29/07/2022



Natalie Van Poppel

0491 168 530



The floor plan is not to scale, measurements are indicative and in metres. Solar/or elements are not in position. Plans should not be relied on, interested parties should make and rely on their own enquiries. All other information provided has been collected from reliable sources but cannot be guaranteed for accuracy.



26/1317-1321 Princes Highway, Heathcote

