

STONE



214/47-49 The Esplanade Ettalong Beach, NSW



Atlantis in Ettalong Beach

Situated in the heart of Ettalong beach in the Prestigious Atlantis building, just footsteps to the beach lies this luxurious one bedroom apartment.

With Ettalong beach, shops, cafes, restaurants, memorial club and palm beach ferry all at your fingertips, this property is ideal for a weekender, investment or for those looking to retire to a low maintenance, stress-free coastal lifestyle.

- Modern well thought out design opposite the beach
- Water views to Lion Island from your balcony
- Master bedroom opens to balcony
- Internal Laundry, ducted air conditioning, floorboards
- Gas Cook top, Dishwasher and a convection microwave,
- Security complex with video intercom system
- Basement parking and lock up storage cage
- A short 5-minute drive to Woy Woy train station to commute to city

Price: \$740,000
Council Rates: \$1,089.00/year (approx)
Water Rates: \$773.38/year (approx)
Strata Rates: \$1,250.00 p/q



Helen Hughes

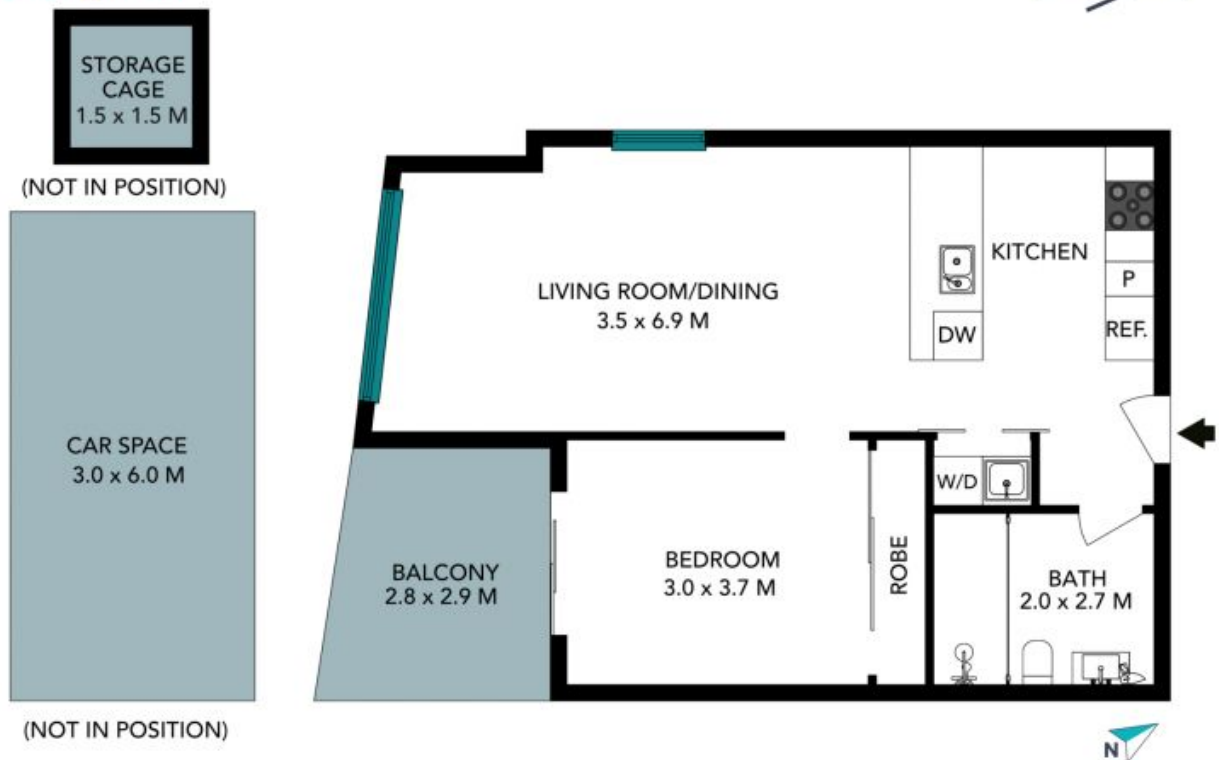
0418 220 622



Christel Renton

0417 208 314

214/47-49 The Esplanade
Ettalong Beach



The floor plan is not to scale, measurements are indicative and in metres. Exterior elements are not in position. Plans should not be relied on. Interested parties should make and rely on their own enquiries. All other information provided has been collected from reliable sources but cannot be guaranteed for accuracy.

214/47-49 The Esplanade
Ettalong Beach



The floor plan is not to scale; measurements are indicative and in metres. All features included in this 3D plan are for inspiration purposes only. This is not an exact replica of the property or the position of exterior elements. Plans should not be relied on. Interested parties should make and rely on their own enquiries.