



5/34 Elizabeth Street Ashfield, NSW

2 1 1

Beautifully presented, perfectly located and oozing with natural light

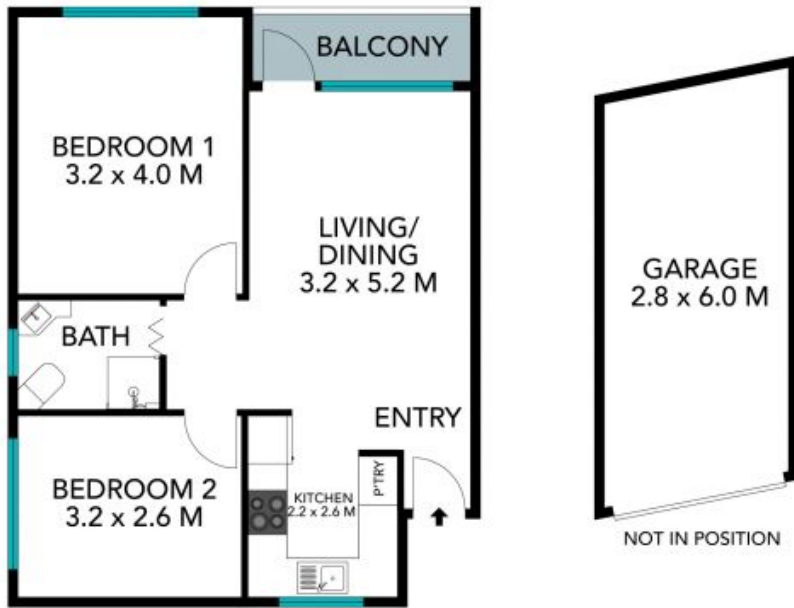
Located in one of Ashfield's most highly sought after locations based on its immediate access to Ashfield Train Station, specialty stores and highly respected schools and day care facilities this immaculately presented property is quietly located on the first floor of this proudly maintained security building. With updated featured throughout and easy floor plan this magnificent home will ensure that all boxes are ticked upon arrival

Price: Deposit Taken
Bond: \$1,900
Available Date: 12/08/2022



Enrico Catania

0450 072 832



INT: 59m²

The floor plan is not to scale; measurements are indicative and in metres. Exterior elements are not in position. Plans should not be relied on. Interested parties should make and rely on their own enquiries. All other information provided has been collected from reliable sources but cannot be guaranteed for accuracy.

5/34 Elizabeth Street, Ashfield

