



4/71 Wolseley Street Bexley, NSW



### Entry level first home or investment in a superb location

Price: \$442,000

North east facing 1 bedroom unit with lock up garage in a well-maintained block. Located minutes from Kogarah station, buses, shops and Woolworths supermarket. Excellent opportunity for the astute investor or first home buyers. This opportunity will not last long, so contact us today to arrange an inspection.



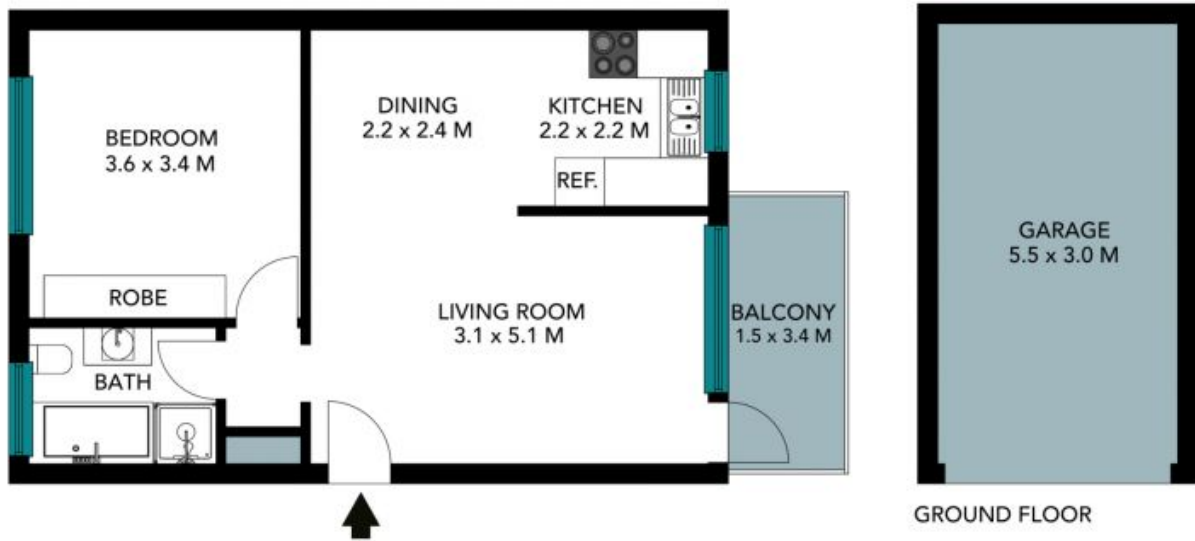
**Sam Abbas**

0406 750 075



**Tyler Taylor**

0402 462 405



The floor plan is not to scale, measurements are indicative and in metres. Exterior elements are not in position. Plans should not be relied on, interested parties should make and rely on their own enquiries. All other information provided has been collected from reliable sources but cannot be guaranteed for accuracy.

4/71 Wolsley Street, Bexley  
Bexley



GROUND FLOOR

The floor plan is not to scale; measurements are indicative and in metres. All features included in this 3D plan are for inspiration purposes only. This is not an exact replica of the property or the position of exterior elements. Plans should not be relied on. Interested parties should make and rely on their own enquiries.