



3 Travertine Crescent Doreen, VIC

4 2 2

**Don't Blink!**

Located in the heart of Riverstone this beautifully presented 4 bedroom or 3 bedroom plus study home has everything you'll need and more. Walking distance to Riverstone Central, Ashley Park Primary School, Plenty Gorge, loads of parks and so much more, Features include:

**Price:** \$690,000



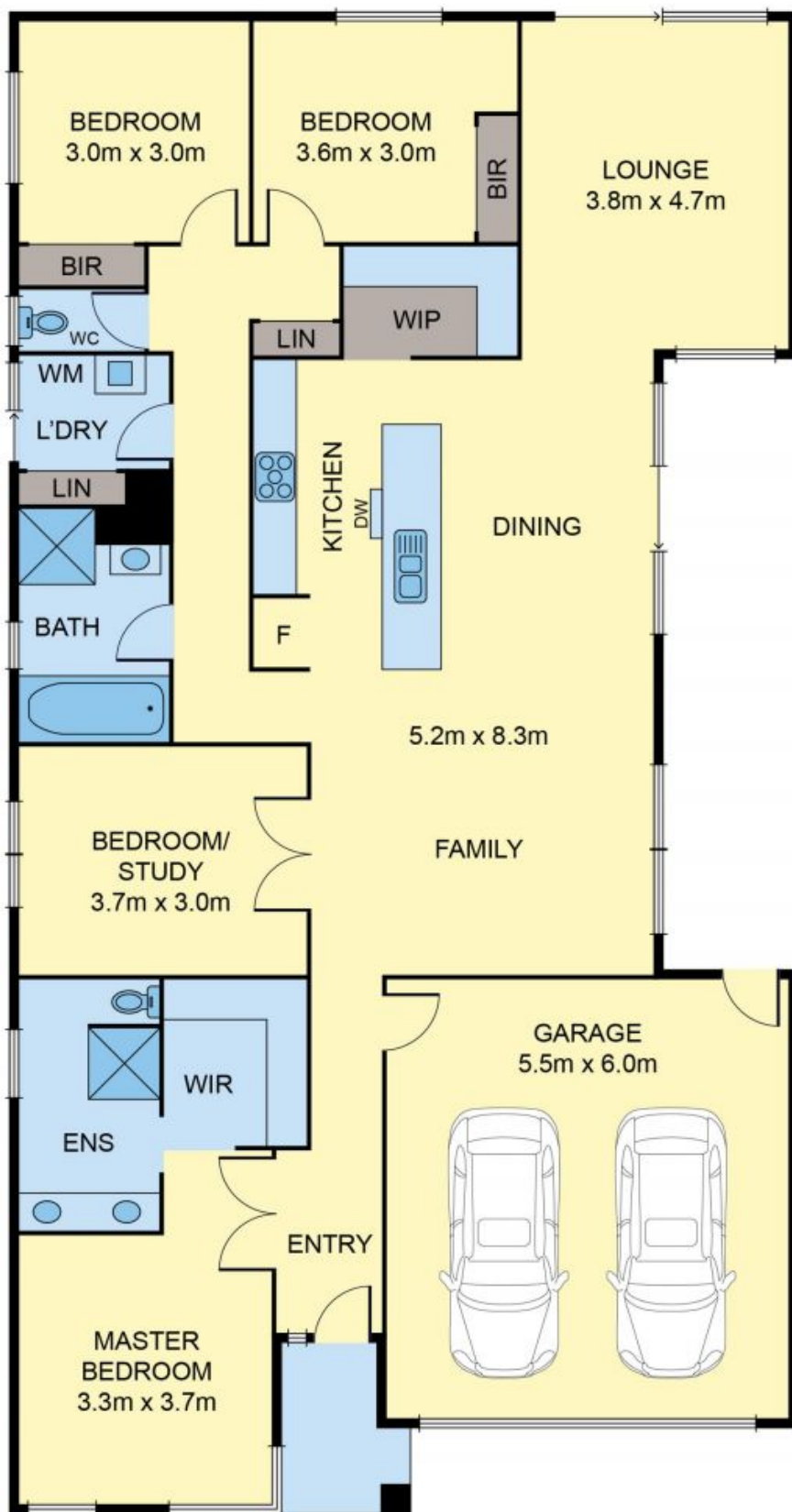
**Dean Zammit**

0405 140 704



**Jessica Conte-Singh**

0400 134 550



Disclaimer: Please note plans are indicative only and not drawn to exact scale. All dimensions are approximate. Potential buyers should satisfy themselves of any pertinent matters.