

25 Bambara Crescent Beecroft, NSW

3 2 1

Perfect High Side Block with North Facing Rear on 929.5sqm within Cheltenham Girls zoning

Set in a neighbourhood of prestige homes, this high side, level and rectangular 929.5sqm block offers opportunity aplenty. A perfect canvas to make your own, it's an optimal chance to occupy immediately, renovate or recreate in time (STCA) - and revel in a tightly-held location that's a quick commute from Beecroft village, and cherished for its renowned schools.

Price: Auction this Saturday 4:45pm
Council Rates: \$534.30 p/q
Water Rates: \$160.20 p/q

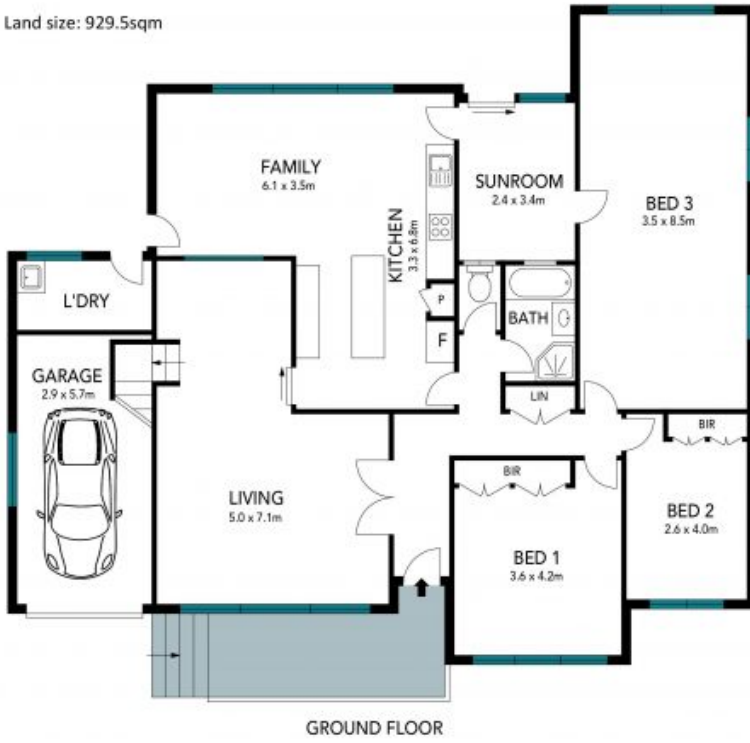


Kevin Dearlove
0403 338 302



Brian Kong
0435 333 383

Land size: 929.5sqm



The floor plan is not to scale; measurements are indicative and in metres. Exterior elements are not in position. Plans should not be relied on. Interested parties should make and rely on their own enquiries.



25 Bambara Crescent, Beecroft

