

36 Whitfield Parade Hurstville Grove, NSW



### New luxury residence in exclusive waterside enclave

Basking in light and embellished with stunning high-end finishes, this brand-new fully automated residence showcases luxurious contemporary design at its best.

Price: \$2,825,000



**Terry Gareb**

0424 523 630



Ground Floor



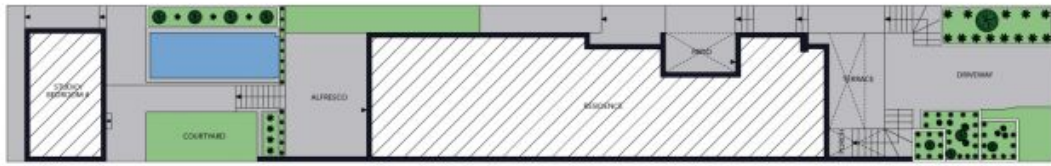
First Floor



Lower Ground Floor



The floor plan is not to scale, measurements are indicative and in metres. All features included in this 3D plan are for inspiration purposes only. This is not an exact replica of the property or the position of exterior elements. Plans should not be relied on. Interested parties should make and rely on their own enquiries.



Site Plan



Ground Floor



First Floor



Lower Ground Floor



The site plan and floor plan are not to scale; measurements are indicative and in metres. Bushes and trees are placed for illustration purposes. Plans should not be relied on. Interested parties should make and rely on their own enquiries. All other information provided has been collected from reliable sources but cannot be guaranteed for accuracy.