



21 Dorset Road Heathcote, NSW

3 

1 

### Entertainers' lifestyle in peaceful bush location

An ideal opportunity for renovators, set on a 588sqm block (approx.), this three-bedroom home presents endless potential to the entertaining family. Blessed with spacious interiors, sunlit backyard and outlooks over Heathcote National Park whilst conveniently located to local amenities.

**Price:** \$1,013,000  
**Council Rates:** \$444.90 p/q  
**Water Rates:** \$160.18 p/q



**Gerard Foote**

0433 421 333



**Liam Pesa**

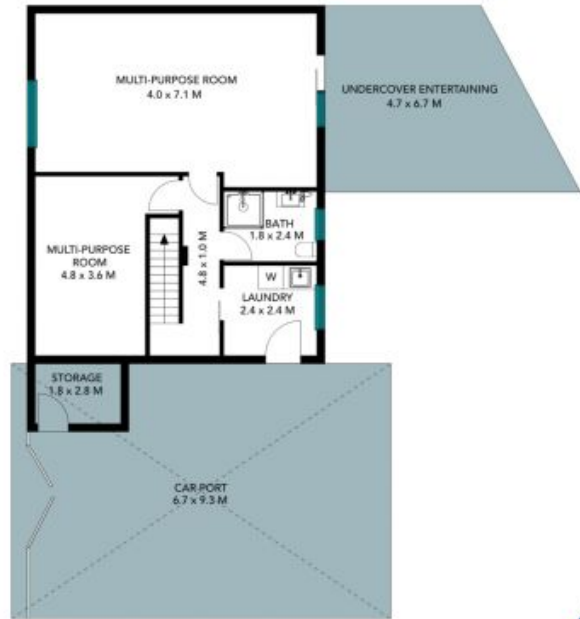
0423 601 244

21 Dorset Road  
Heathcote

STONE



Upper Level



Lower Level



The floor plan is not to scale; measurements are indicative and in metres. Exterior elements are not in position. Plans should not be relied on. Interested parties should make and rely on their own enquiries. All other information provided has been collected from reliable sources but cannot be guaranteed for accuracy.

21 Dorset Road  
Heathcote

STONE



Upper Level



Lower Level



The floor plan is not to scale; measurements are indicative and in metres. All features included in this 3D plan are for inspiration purposes only. This is not an exact replica of the property or the position of exterior elements. Plans should not be relied on. Interested parties should make and rely on their own enquiries.