



5/14 Fairway Close Manly Vale, NSW

2 1 1

### Private and ultra-convenient

Set directly across from Manly Golf Course in a quiet cul-de-sac, this bright top floor apartment is a great choice for first time buyers and investors; enjoying a private corner position, it's within a short flat walk to markets, transport and beaches.

**Price:** \$1,060,000  
**Council Rates:** \$382.10 p/q  
**Water Rates:** \$156.00 p/q  
**Strata Rates:** \$1,066.66 p/q



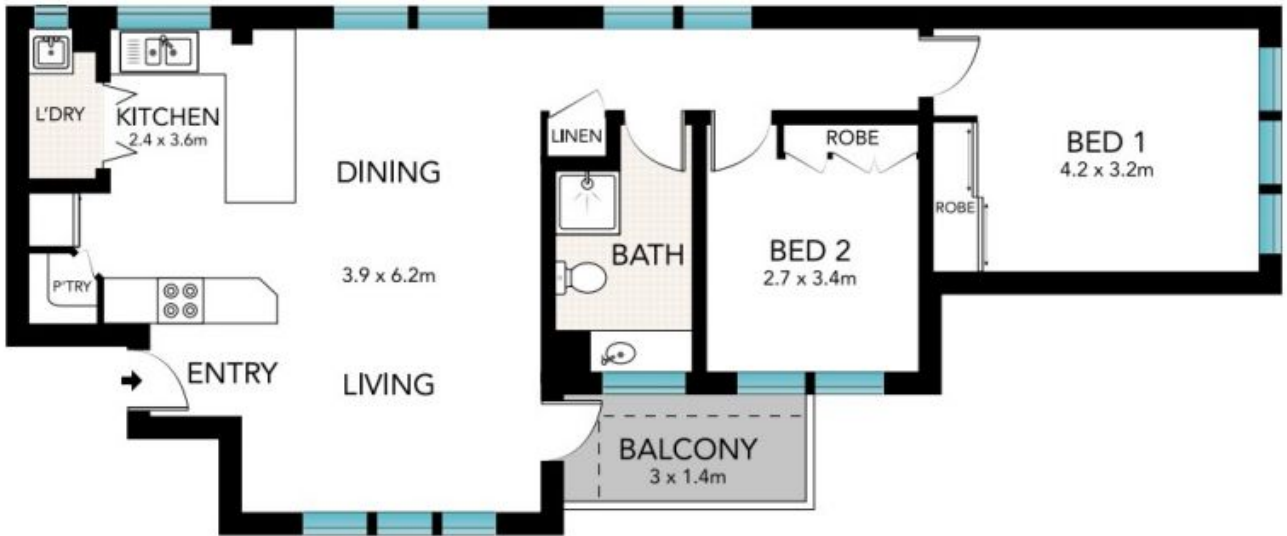
**Todd Baker**

0407 795 090

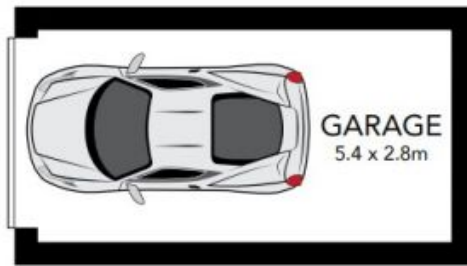


**Todd Baker**

0407 795 090



SECOND LEVEL



GROUND LEVEL



All the information provided has been collected from reliable sources but cannot be guaranteed for accuracy. Interested persons should rely on their own enquiries. All dimensions are approximate and indicative only.