



6/36 Forest Street Whittlesea, VIC

3

2

2

Don't judge a book?

Bigger than some houses, this spacious 3 bedroom home has all the features you need, perfectly located and only a 5 minute walk to Church Street this property represents value and comfort. This is one of only a few units that has its own private access.

Price:

\$411,000



Dean Zammit

0405 140 704

JD Estate Agents Pty

03 9716 2000

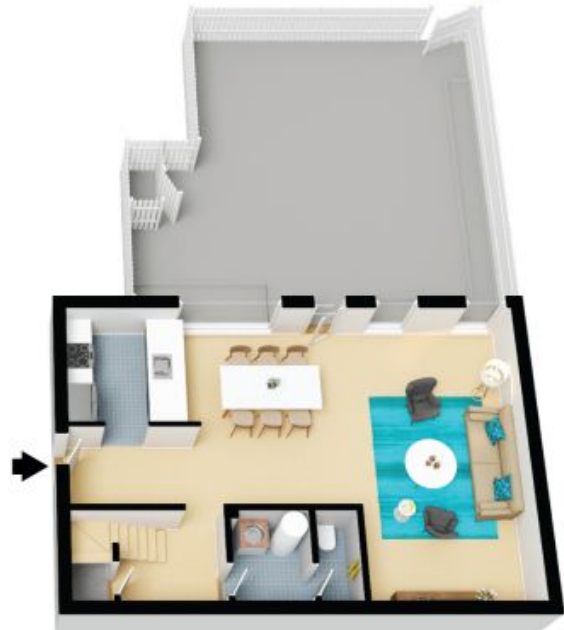
Ltd

6/36 Forest Street
Whittlesea

STONE



First Floor



Ground Floor



The floor plan is not to scale, measurements are indicative and in metres. All features included in this 3D plan are for inspiration purposes only. This is not an exact replica of the property or the position of exterior elements. Plans should not be relied on. Interested parties should make and rely on their own enquiries.

STONE



First Floor



Ground Floor



The floor plan is not to scale, measurements are indicative and in metres. Exterior elements are not in position. Plans should not be relied on, interested parties should make and rely on their own enquiries. All other information provided has been collected from reliable sources but cannot be guaranteed for accuracy.