



80/181-183 St Johns Avenue Gordon, NSW 3 2 2

Private and substantial, resort-style lifestyle

Peace, privacy and house-like proportions define this outstanding ground floor apartment that enjoys a picturesque setting within the exclusive 'St Johns Wood Estate'. Framed by established gardens with its own private entrance, it's a quality easy care home with expansive living, a superb terrace, DLUG and exceptional amenities, in the Killara High and Public School catchments.

Price: Contact Agent

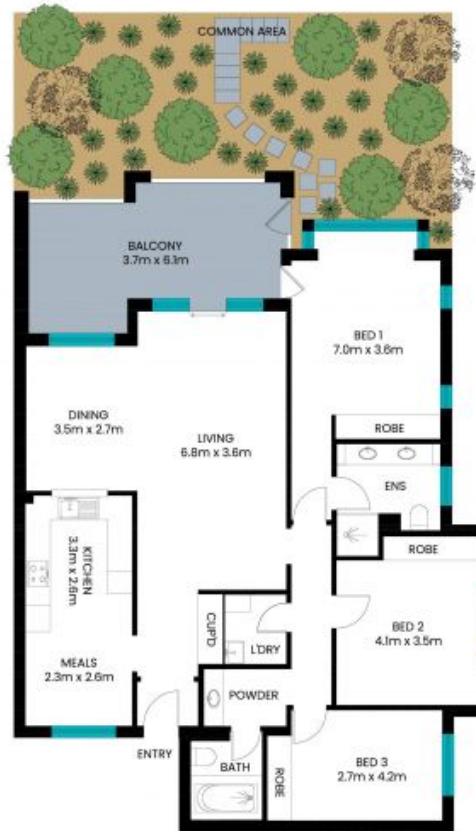


Matt Payne
0435 825 242



Ryan Woo
0410 884 680

80/181-183 St Johns Avenue
Gordon



Internal area: 123m²
Balcony area: 18m²
Garage area: 54m²
Total area: 195m²

The site plan and floor plan are not to scale; measurements are indicative and in meters. Bushes and trees are placed for illustration purposes. Plans should not be relied on. Interested parties should make and rely on their own enquiry. All other information provided has been collected from reliable sources but cannot be guaranteed for accuracy