



3C/2 Brady Street Mosman, NSW

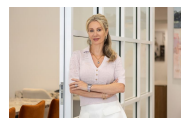
2 2 1

Elegant courtyard garden sanctuary

Rare garden apartment, in Mosman's most prestige development " Bridlewood Gardens". Offering an ideal low maintenance lifestyle, this elegant courtyard residence delivers superb space, privacy and modern inclusions. Bright open plan living and dining area merges seamlessly to the outdoor entertaining areas. The kitchen is immaculate and offers gas cooking and both bedrooms have built in wardrobes and direct access to the courtyard and overlooking your private gardens. Positioned within a tightly held Mirvac development opposite Bridgepoint Shopping Centre, a short stroll to Mosman Village, schools and bus transport across the road.

Price:

Contact Marize Bellomo



Marize Bellomo

0414 972 203



Bruce N. Huang

0468 694 060

à,fé²•æ-é»,,



The site plan and floor plan are not to scale; measurements are indicative and in metres. Bushes and trees are placed for illustration purposes. Plans should not be relied on. Interested parties should make and rely on their own enquiries. All other information provided has been collected from reliable sources but cannot be guaranteed for accuracy.

3C/2 Brady Street
Mosman



The floor plan is not to scale; measurements are indicative and in metres. All features included in this 3D plan are for inspiration purposes only. This is not an exact replica of the property or the position of exterior elements. Plans should not be relied on. Interested parties should make and rely on their own enquiries.