



208/28 Peninsula Drive Breakfast Point, NSW



## Elegant apartment with study

Highly desirable oversized one bedroom with a separate study room in the SIRIUS building.

Featuring spacious interiors, a large study area and ample light, there is also a good size balcony with lovely pool views.

There is one large bedroom with built-ins, luxuriously finished bathroom, gourmet kitchen with stainless steel European appliances and secure parking for one car.

Within close proximity to the Breakfast Point Village centre, this property includes access to the lovely Harbour Precinct pool and the exclusive Breakfast Point Country Club.

Total size: 114sqm; Internal (incl. balcony) 95sqm, Under Cover Car Space 16sqm and Storage Cage 3sqm

**Price:** Sod - Contact Agent  
**Council Rates:** \$302.00 p/q  
**Water Rates:** \$161.00 p/q  
**Strata Rates:** \$1,716.00 p/q

**Michael Carbone**

0416 280 610

**Christian Leung**

0423 555 162

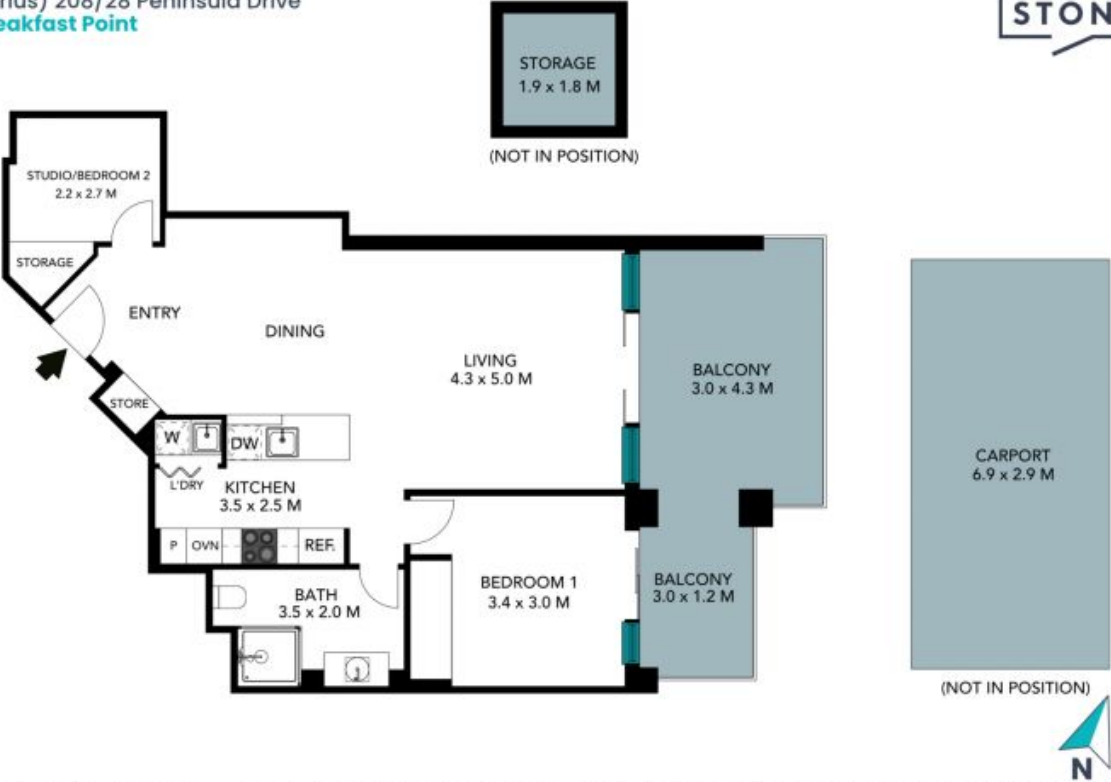
(Sirius) 208/28 Peninsula Drive  
Breakfast Point

STONE



The floor plan is not to scale; measurements are indicative and in metres. All features included in this 3D plan are for inspiration purposes only. This is not an exact replica of the property or the position of exterior elements. Plans should not be relied on. Interested parties should make and rely on their own enquiries.

(Sirius) 208/28 Peninsula Drive  
Breakfast Point



The floor plan is not to scale, measurements are indicative and in metres. Exterior elements are not in position. Plans should not be relied on, interested parties should make and rely on their own enquiries. All other information provided has been collected from reliable sources but cannot be guaranteed for accuracy.