



34 Malton Road Beecroft, NSW

4 3 2

Prime east-side possibilities on 809sqm with northerly aspect

Secluded within a lush haven of native trees across an 809sqm allotment in one of the north's most coveted addresses, this original family dwelling holds tremendous future potential that's easy to envisage in such a sought-after street. Its substantial dual level layout with charming art deco influences has nurtured the same family for 60 years, in an enviably situated enclave with prominent school zoning and every convenience accessible by foot.

Price: Auction
Council Rates: \$574.20 p/q
Water Rates: \$146.00 p/q



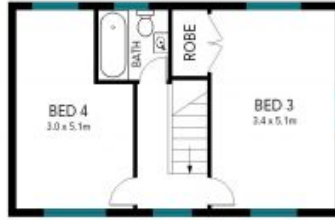
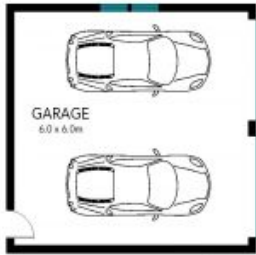
Kevin Dearlove

0403 338 302

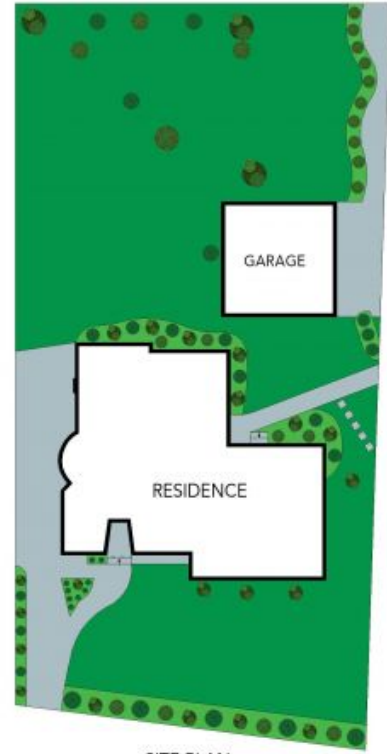


Brian Kong

0435 333 383



FIRST FLOOR



SITE PLAN



The floor plan is not to scale; measurements are indicative and in metres. Exterior elements are not in position. Plans should not be relied on. Interested parties should make and rely on their own enquiries.

34 Malton Road, Beecroft

STONE