

12/37 Campbell Street Parramatta, NSW

2 

2 

1 

Ultimate Location

This light and bright two-bedroom apartment is beautifully positioned in the most convenient location. The dwelling is situated on level two within a well-maintained secure block, close to all local amenities and sits directly across from Westfield Parramatta. Only a moment's walk to bus services, Parramatta Station, Jubilee Park, Parramatta High School, Parramatta Public School and "Eat Street" restaurants/cafes dining district.

Price: \$615,000



Aaron Lih

0420 825 598



Aaron Lih

0420 825 598

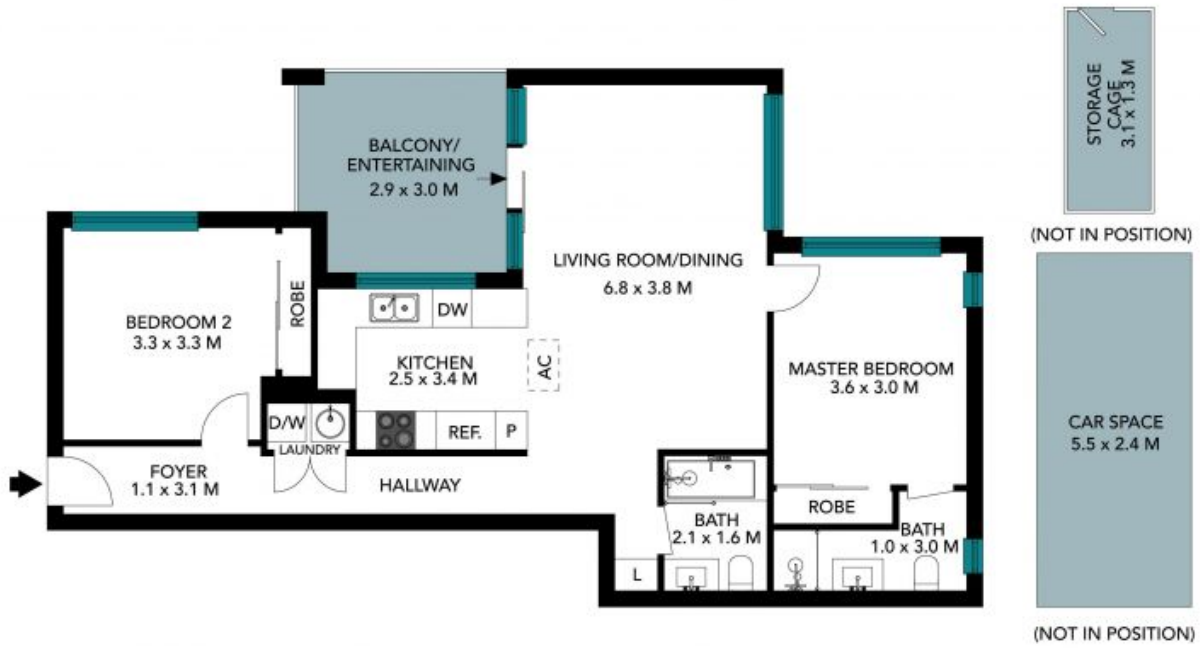
12/37 Campbell street
Parramatta



The floor plan is not to scale; measurements are indicative and in metres. All features included in this 3D plan are for inspiration purposes only. This is not an exact replica of the property or the position of exterior elements. Plans should not be relied on. Interested parties should make and rely on their own enquiries.

12/37 Campbell street
Parramatta

STONE



The floor plan is not to scale, measurements are indicative and in metres. Exterior elements are not in position. Plans should not be relied on. Interested parties should make and rely on their own enquiries. All other information provided has been collected from reliable sources but cannot be guaranteed for accuracy.