

2 Hidden Valley Drive Eatons Hill, QLD



MASSIVE LOWSET HOME - ACREAGE LIVING

This beautiful family home has been cleverly located in an elevated position that not only captures the views, but also the prevailing breezes. A home that has been designed for family living, with the parent's bedroom located well away from the kid's rooms.

Price:

Sold for \$980,000



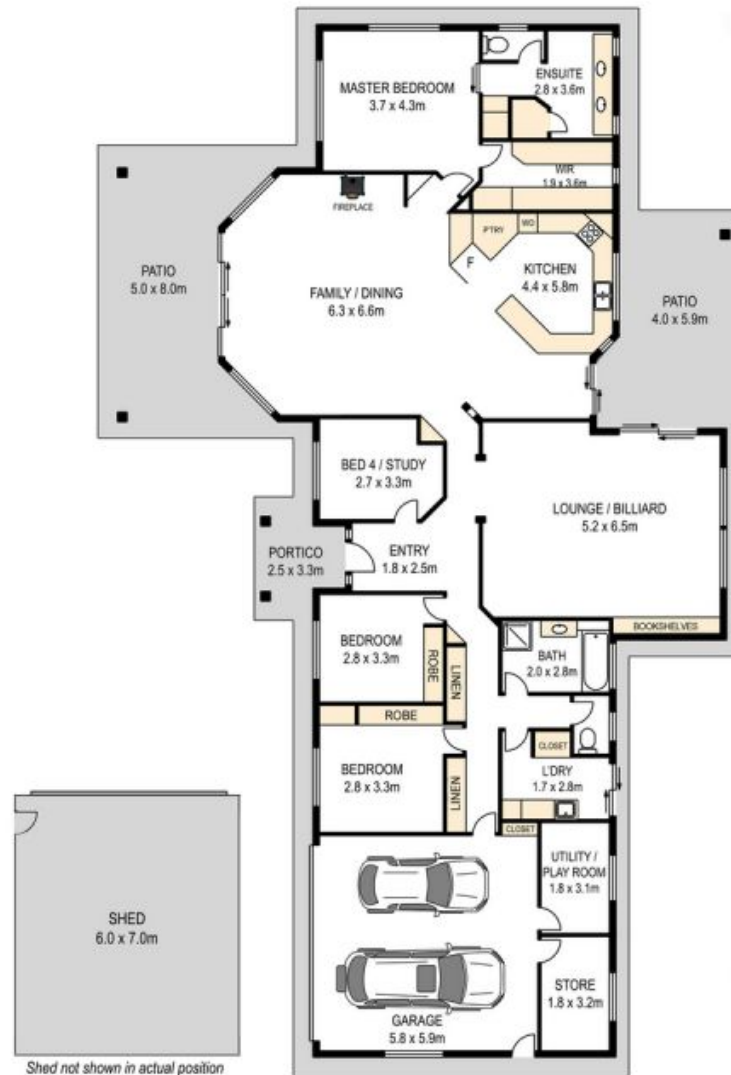
John Ward

0427 090 968



John Ward

0427 090 968



2 Hidden Valley Drive, Eatons Hill

Whilst every attempt has been made to ensure accuracy, floor plans are representative and should be used as a guide only



6000sqm - ACREAGE
6 x 7m SHED
ELEVATED BLOCK

2 Hidden Valley Drive, Eatons Hill

Whilst every attempt has been made to ensure accuracy, site plans are representative and should be used as a guide only