

10 Sylvia Court Eatons Hill, QLD

4

2

3

IEWS, POOL, DECKS - QLD LIVING AT ITS BEST

This stunning Queenslander style home has everything you need to feel at home both inside and out. The elevated position captures fantastic views across to Mt Cootha and allows for cooling breezes in the afternoon. The main bedroom, lounge & dining and even the stunning well designed kitchen all are able to take in the beautiful views. All the charm and feel of a Queenslander, but with intricate touches like double sinks to the master ensuite, superbly design kitchen with loads of storage and the raked ceiling to the main living area.

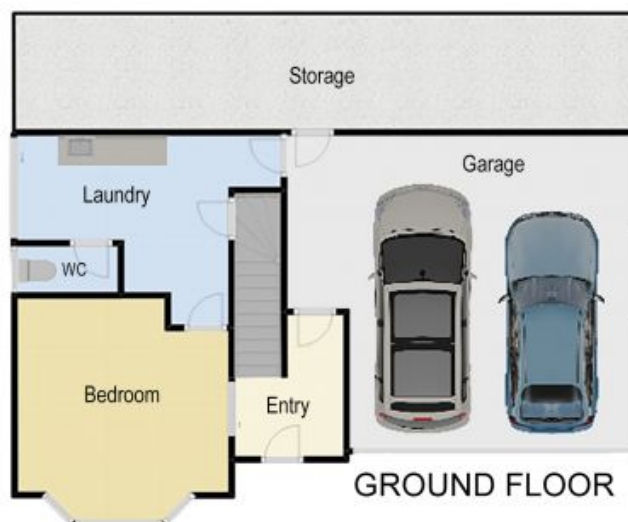
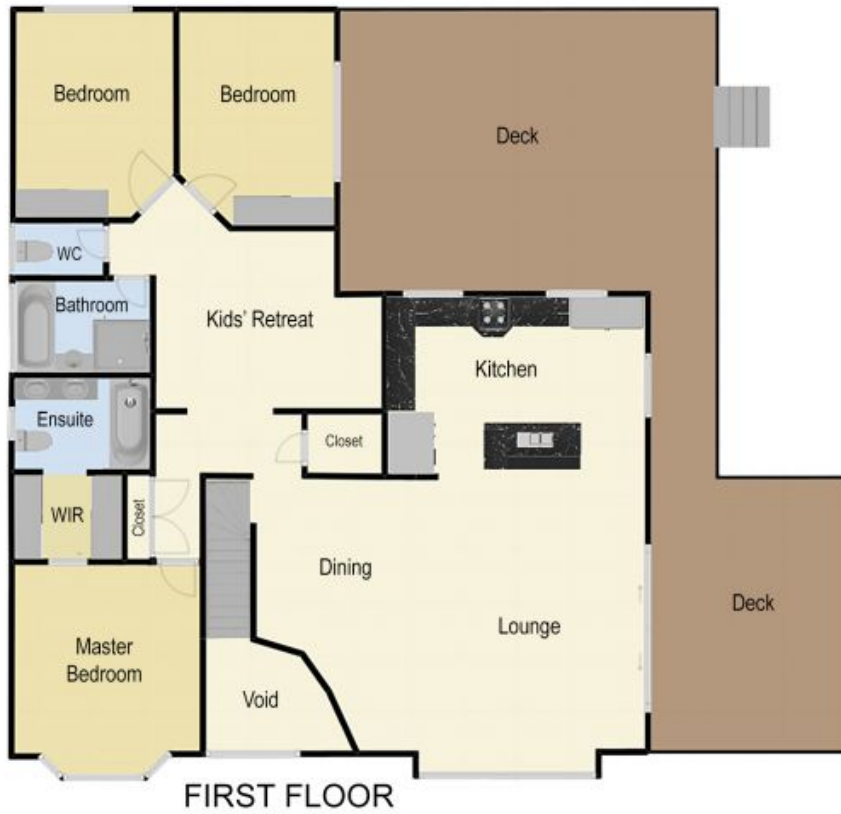
Price:

Offers Over \$675,000



John Ward

0427 090 968



10 Sylvia Court, Eatons Hill

Whilst every attempt has been made to ensure accuracy, floor plans are representative and should be used as a guide only



LAND SIZE: 682sqm
INGROUND POOL
NO MOW LAWN
ROOM FOR CHILDREN & PETS

10 Sylvia Court, Eatons Hill

Whilst every attempt has been made to ensure accuracy, site plans are representative and should be used as a guide only