



9 Mona Vale Way Petrie, QLD

3

1

2

### CREATE YOUR OWN TROPICAL PARADISE

This recently renovated split level home will appeal to the avid gardener with stunning established trees and gardens providing a tropical paradise feel. The dappled sunlight inside the home, creates a relaxing quiet place to unwind after work. All 3 bedrooms upstairs have warm timber floorboards - which have been recently re-polished. Beautiful new tiles flow though the lounge, dining and kitchen level. The kitchen has just been renovated and offers loads of storage and bench space all the while looking out at the stunning gardens.

Price:

Sold for \$438,350



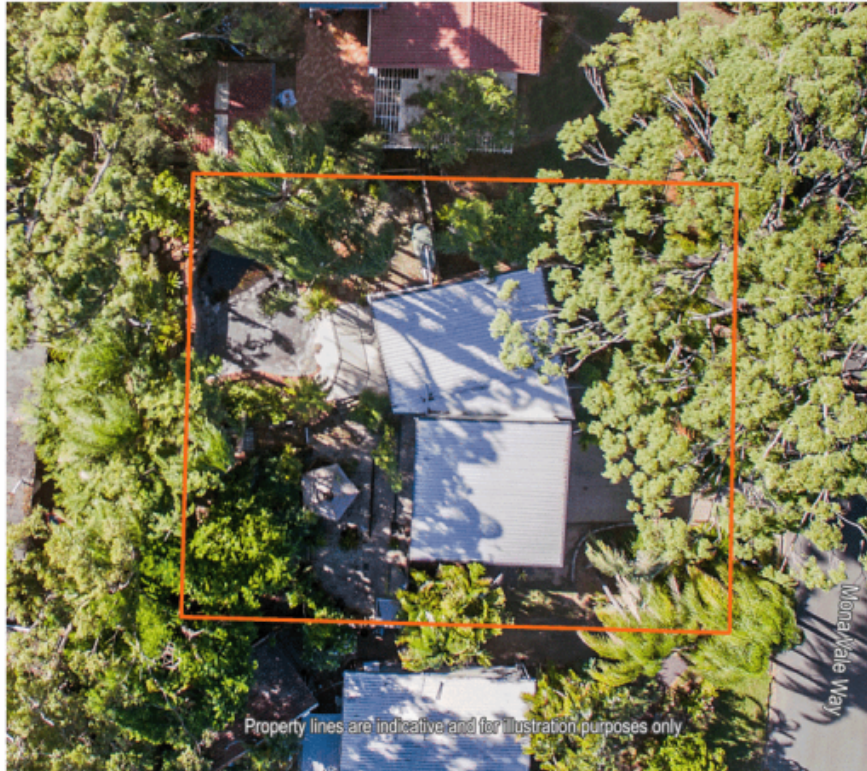
**John Ward**

0427 090 968



**9 Mona Vale Way, Petrie**

Whilst every attempt has been made to ensure accuracy, floor plans are representative and should be used as a guide only



880sqm Block  
Massive Pool  
Established Gardens

**9 Mona Vale Way, Petrie**

Whilst every attempt has been made to ensure accuracy, site plans are representative and should be used as a guide only