



25/145 Faunce Street Gosford, NSW

2 2 2

Convenient Living

This two bedroom apartment is located in a prime position in Gosford CBD. Featuring a large freshly carpeted combined living and dining area with a balcony looking over the city. The good-sized kitchen offers great storage and the 2 bedrooms both have built ins included with the main bedroom boasting an ensuite. Secure double car space plus storage cage. This property is perfect for the first home buyer or investor.

Council Rates: \$1,089 per year.

Water Rates: \$584.56 per year.

Strata Levies: \$764.40 per quarter.

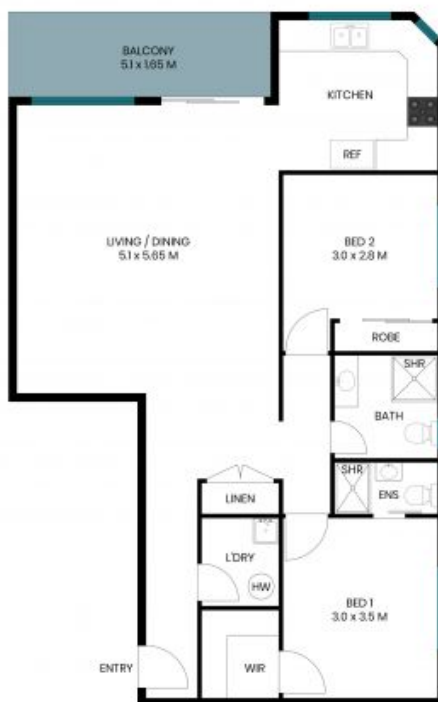
Price: Contact Agent
Council Rates: \$1,089.00/year (approx)
Water Rates: \$584.56/year (approx)



Adrian Knight

0410 407 188

25/145 Faunce St
Gosford



Floor Plan

The Floor plan is not to scale; measurements are indicative and in metres. Plans should not be relied on. Interested parties should make and rely on their own enquiries. All other information provided has been collected from reliable sources but cannot be guaranteed for accuracy.

25/145 Faunce St
Gosford



FLOOR PLAN

The floor plan is not to scale; measurements are indicative and in metres. All features included in this 3D plan are for inspiration purposes only. This is not an exact replica of the property or the position of exterior elements. Plans should not be relied on. Interested parties should make and rely on their own enquiries.