



10/1 Mouat Street Lyneham, ACT



Stunning north facing apartment in prime position!

Located in a top pocket of Canberra with generous indoor and outdoor living space. With a large versatile floor plan that features no shortage of storage or living area you won't have to compromise on space. The living area flows naturally to a large sunlit courtyard that is perfect for entertaining, enjoy a sense of retreat in this well-kept apartment.

Price: \$500,000



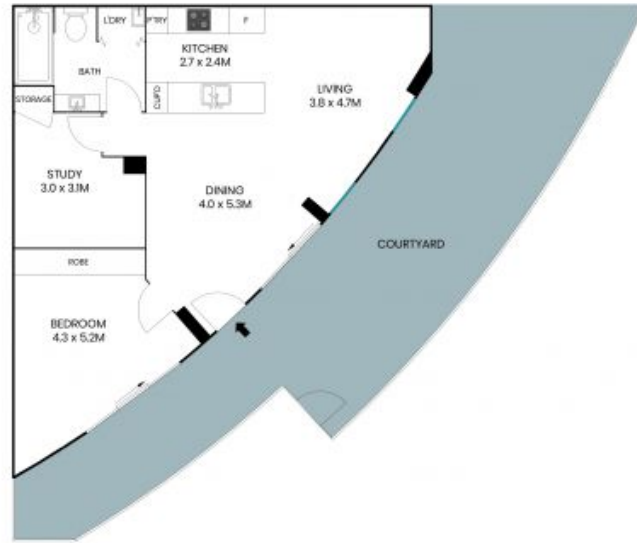
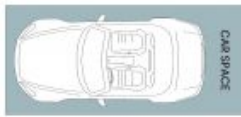
Jess Smith

0410 125 475



Sam Dyne

0488 689 525



Level One



The site plan and floor plan are not to scale; measurements are indicative and in metres. Bushes and trees are placed for illustration purposes. Plans should not be relied on. Interested parties should make and rely on their own enquiries. All other information provided has been collected from reliable sources but cannot be guaranteed for accuracy.

10/1 Mouat Street
Lyneham



Level One



The floor plan is not to scale; measurements are indicative and in metres. All features included in this 3D plan are for inspiration purposes only. This is not an exact replica of the property or the position of exterior elements. Plans should not be relied on. Interested parties should make and rely on their own enquiries.