



7/7-15 Bellevue Avenue Greenwich, NSW



Dual Level Apartment, House Like Proportions

With lift access to both expansive levels spanning approx. 219sqm, this townhouse-style two-storey apartment is located in the landscaped grounds of the 'Bellevue Gardens'. Boasting house like proportions, two living spaces and an alfresco terrace, perfect for entertaining against a private leafy backdrop. Set close to tranquil parkland and boutique Greenwich village, the property is a stroll to St Leonards CBD's train station, RNS Hospital, shops, cafes and bus interchange.

Price:

Contact Agent



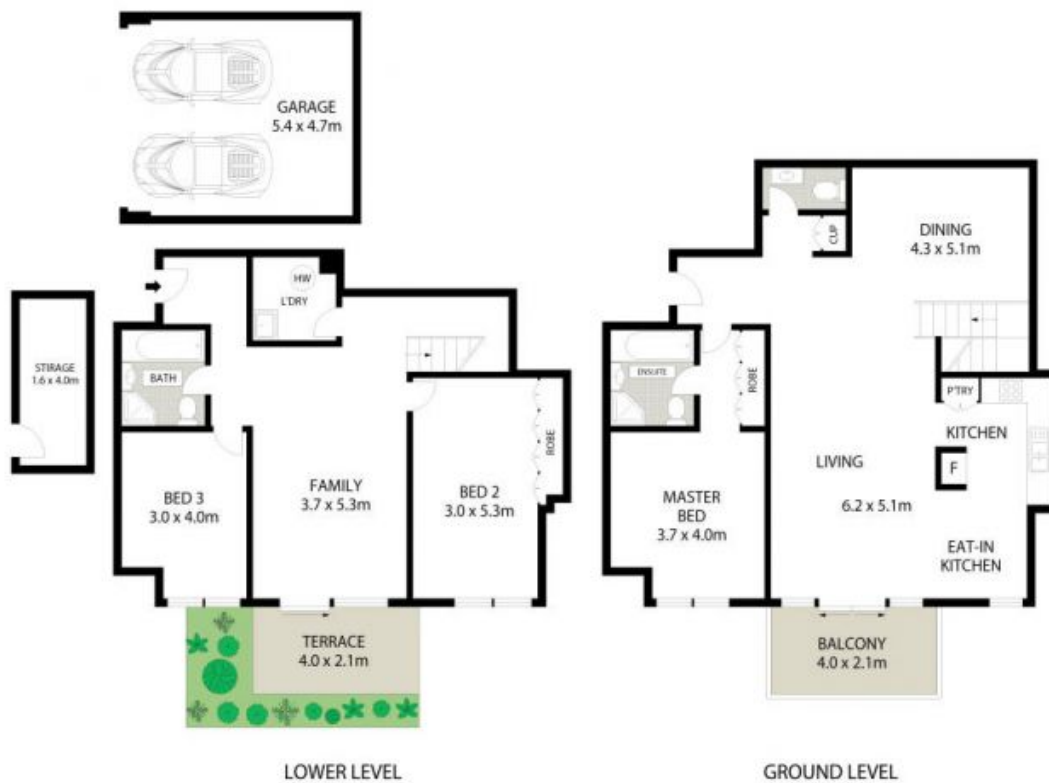
Bernadette Hayes

0431 558 505



Maggie MacKenzie

0410 305 103



LOWER LEVEL

GROUND LEVEL



All information contained herein is gathered from sources we believe to be reliable. We cannot however guarantee its accuracy and interested parties should make and rely on their own enquiries.

7/7-15 Bellevue Avenue

Greenwich