



15/173 Russell Avenue Dolls Point, NSW

2 1 2

### Beachside living with uninterrupted views

A superb beach lifestyle opportunity comes with this well-proportioned two-bedroom apartment that's sensationally located right next to Depena Reserve and just a brief stroll through the park to Dolls Point Beach. Its lofty top floor position in a solid brick complex gives it an amazing view over the park to the water, plus it is presented in original condition with plenty of scope to apply your own personal sense of style and add significant appeal in the future.

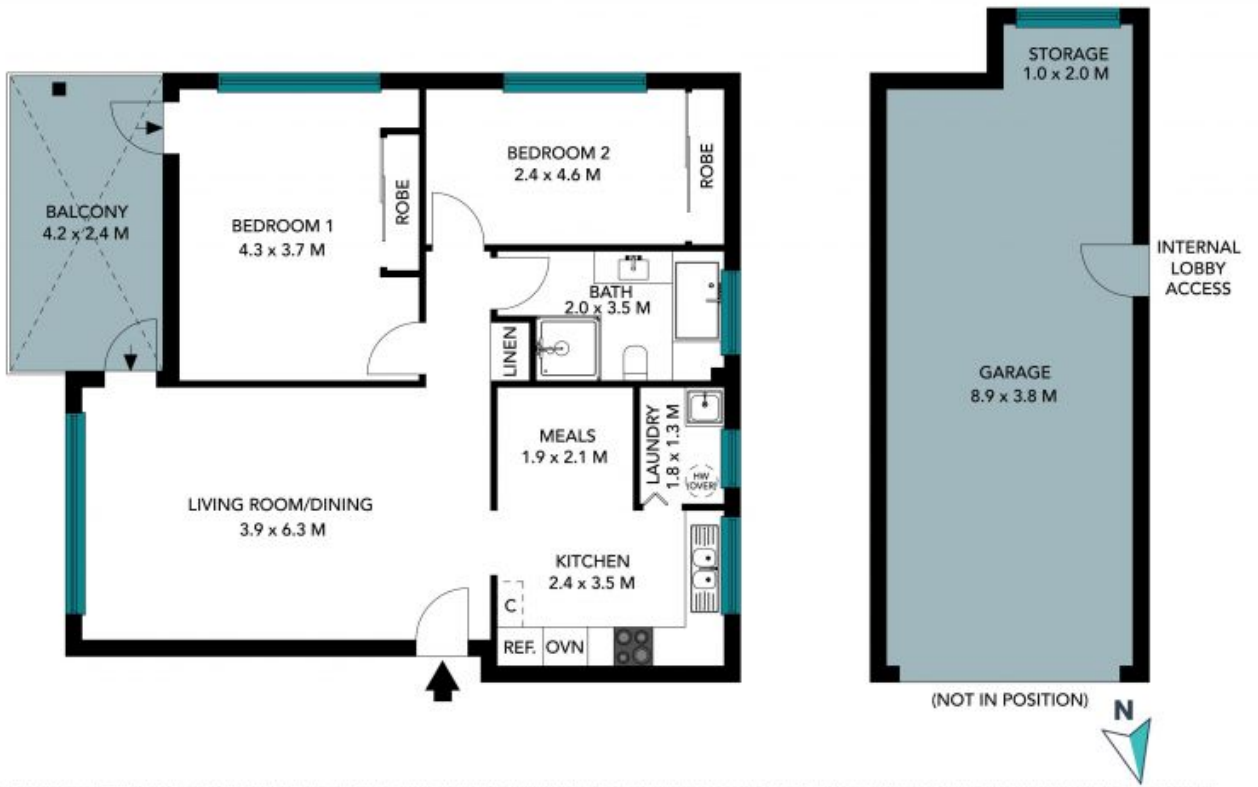
**Price:** SOLD \$902,000 | Shaun Ramani  
**Council Rates:** \$315.00 p/q  
**Water Rates:** \$150.00 p/q  
**Strata Rates:** \$645.00 p/q



**Shaun Ramani**

0417 444 919

15/173 Russell Avenue  
Dolls Point



The floor plan is not to scale; measurements are indicative and in metres. Interior elements are not in position. Plans should not be relied on. Interested parties should make and rely on their own enquiries. All other information provided has been collected from reliable sources but cannot be guaranteed for accuracy.

15/173 Russell Avenue  
Dolls Point



The floor plan is not to scale; measurements are indicative and in metres. All features included in this 3D plan are for inspiration purposes only. This is not an exact replica of the property or the position of exterior elements. Plans should not be relied on. Interested parties should make and rely on their own enquiries.