

39/50-56 Merton Street Sutherland, NSW



Spacious living bathed in northern sun

Conveniently located to all Sutherland town centre amenities and recreational facilities, this freshly schemed, first floor unit is perfect for first home buyers or investors. Spacious, light-filled interiors provide a relaxed lifestyle in a well maintained and secure complex.

Price: \$632,500
Council Rates: \$352.55 p/q
Water Rates: \$150.99 p/q
Strata Rates: \$683.40 p/q

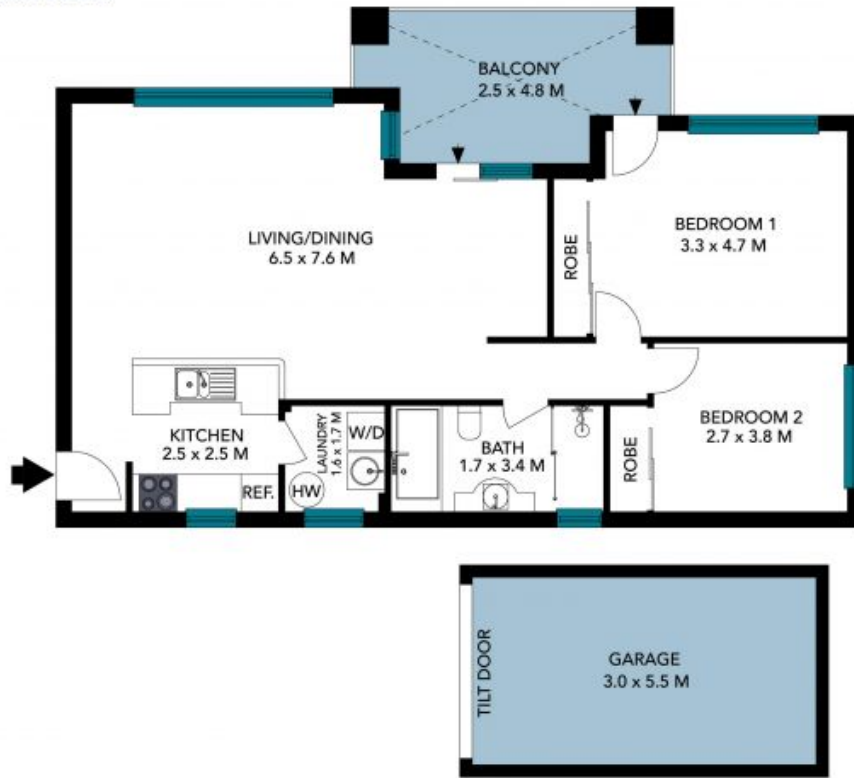


Will Soulos

0403 065 608

39/50-56 Merton Street
Sutherland

STONE



(NOT IN POSITION)



The floor plan is not to scale, measurements are indicative and in metres. Exterior elements are not in position. Plans should not be relied on. Interested parties should make and rely on their own enquiries. All other information provided has been collected from reliable sources but cannot be guaranteed for accuracy.

39/50-56 Merton Street
Sutherland

STONE



The floor plan is not to scale; measurements are indicative and in metres. All features included in this 3D plan are for inspiration purposes only. This is not an exact replica of the property or the position of exterior elements. Plans should not be relied on. Interested parties should make and rely on their own enquiries.