



1/3 Brunton Place Marsfield, NSW

2 1 1

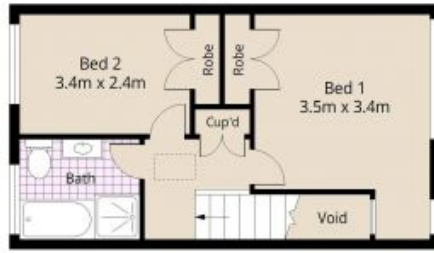
Quiet spacious corner townhouse with expansive courtyard

Bright, stylish and well designed, this town house is positioned to enjoy a peaceful life in a quiet leafy environment with fast access to transport, shops and parks. Boasting only one common wall, the light filled open plan living spills out to an impressive wrap around courtyard, perfect for kids, pets and entertaining year round.

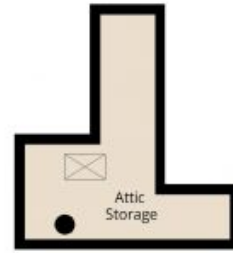
Price: For Sale - \$720,000 - \$790,000

Stone Beecroft | Castle

02 8866 1500
Hill | Epping



First Floor



Ground Floor



1/3 Brunton Place, Marsfield
All dimensions are approximate and should only be used as a guide.