

510/1 Australia Avenue Sydney Olympic Park, NSW



### Spacious 2 bedroom apartment with car space

Conveniently located 2 bedroom apartment with large balcony and leafy outlook. Easy access to Sydney Olympic Park Train Station and walking distance to Accor Stadium and Bicentennial Park.

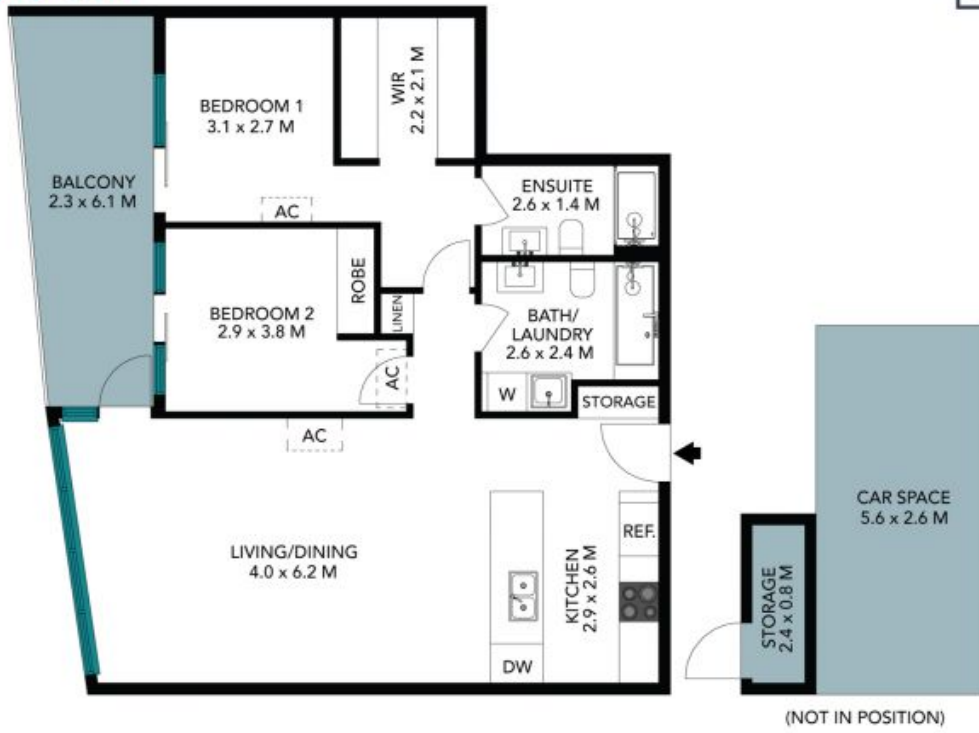
Price:

UNDER CONTRACT

Stone Real Estate -

Head Office

510/1 Australia Avenue  
Sydney Olympic Park



The floor plan is not to scale, measurements are indicative and in metres. Exterior elements are not in position. Plans should not be relied on, interested parties should make and rely on their own enquiries. All other information provided has been collected from reliable sources but cannot be guaranteed for accuracy.



510/1 Australia Avenue  
Sydney Olympic Park



The floor plan is not to scale, measurements are indicative and in metres. All features included in this 3D plan are for inspiration purposes only. This is not an exact replica of the property or the position of exterior elements. Plans should not be relied on. Interested parties should make and rely on their own enquiries.