



A102/551-553 Princes Highway Rockdale, NSW

1 1 1

### Contemporary first home or investment in heart of Rockdale

Enjoy modern comforts and the convenience of strolling to Rockdale Station and plaza from this contemporary apartment.

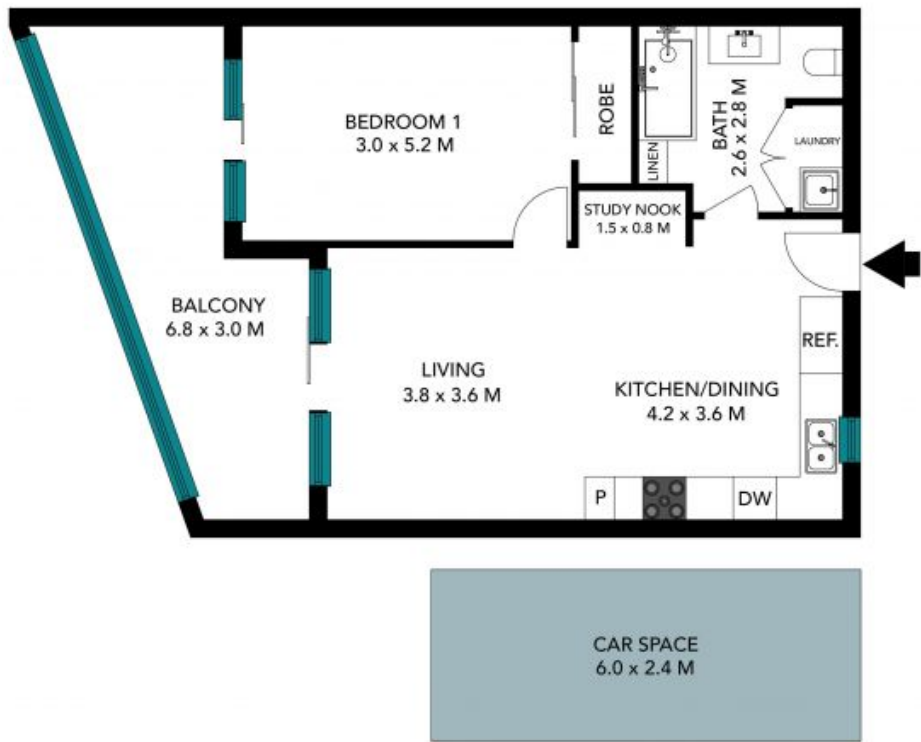
**Price:** SOLD | GEORGE KAMBOUROGLOU  
**Council Rates:** \$357.00 p/q  
**Water Rates:** \$167.00 p/q  
**Strata Rates:** \$1,057.00 p/q



**George Kambouroglou**  
0422 421 111

102/551-553 Princes Hwy Rockdale  
Rockdale

STONE



(NOT IN POSITION)

The floor plan is not to scale, measurements are indicative and in metres. Exterior elements are not in position. Plans should not be relied on. Interested parties should make and rely on their own enquiries. All other information provided has been collected from reliable sources but cannot be guaranteed for accuracy.

102/551-553 Princes Hwy Rockdale  
Rockdale



The floor plan is not to scale; measurements are indicative and in metres. All features included in this 3D plan are for inspiration purposes only. This is not an exact replica of the property or the position of exterior elements. Plans should not be relied on. Interested parties should make and rely on their own enquiries.