



9/16-20 Lansdowne Street Parramatta, NSW



Northerly Aspect Apartment

This top-floor two-bedroom apartment resides within a well-maintained complex of full brick and concrete slab construction. The home is in excellent condition offering bright interiors and plenty of space. The dwelling positions itself in a very convenient CBD fringe location, only a short stroll to bus services and Ollie Webb Reserve/Park. With easy access to Westfield Parramatta, Harris Park Station, Parramatta Station, Parramatta West Public School, Parramatta High School, Great Western Highway and M4 Motorway.

Price: \$570,000



Aaron Lih

0420 825 598



Aaron Lih

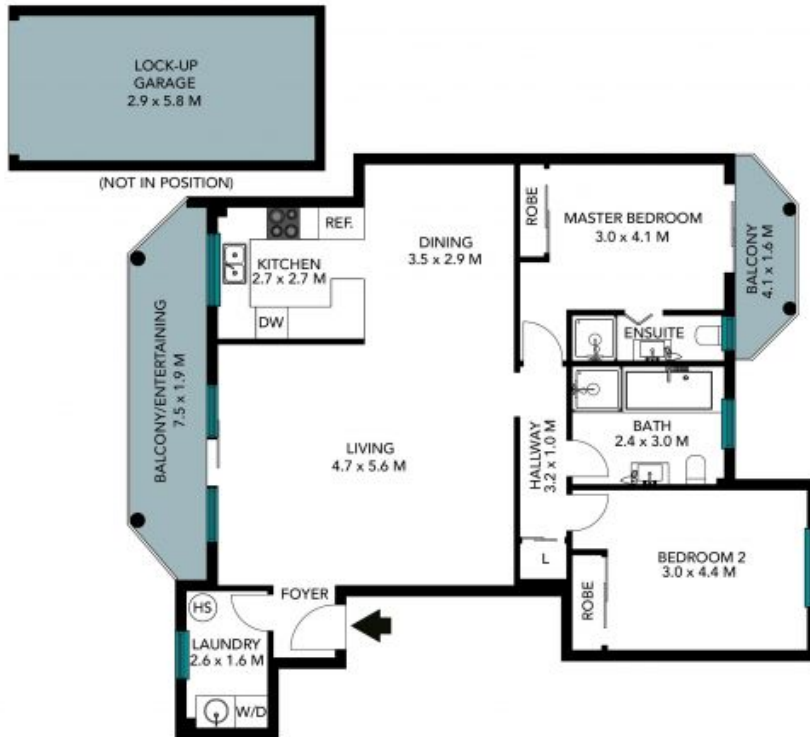
0420 825 598

9/16-20 Lansdowne St
Parramatta



The floor plan is not to scale; measurements are indicative and in metres. All features included in this 3D plan are for inspiration purposes only. This is not an exact replica of the property or the position of exterior elements. Plans should not be relied on. Interested parties should make and rely on their own enquiries.

9/16-20 Lansdowne St
Parramatta



The floor plan is not to scale, measurements are indicative and in metres. Exterior elements are not in position. Plans should not be relied on. Interested parties should make and rely on their own enquiries. All other information provided has been collected from reliable sources but cannot be guaranteed for accuracy.