



5 Matavia Place Bowral, NSW



### Dreaming of Downsizing? - 'Hillgrove'

This delightful single level property offers peace and privacy. Bathed in natural light, this stylish home is spacious and secure. Panoramic windows frame the post-card perfect garden and infuse the home with natural light. The overall feel is one of comfort and substance. The enticing blend of classic design, low maintenance functionality and inspired level garden will delight the downsizer. All close to the ever-popular Hammock Hill, East Bowral Community Centre and Ngununggula Art Gallery.

Price:

Price Guide \$1,390,000



**Anita Roelevink**

0409 367 678

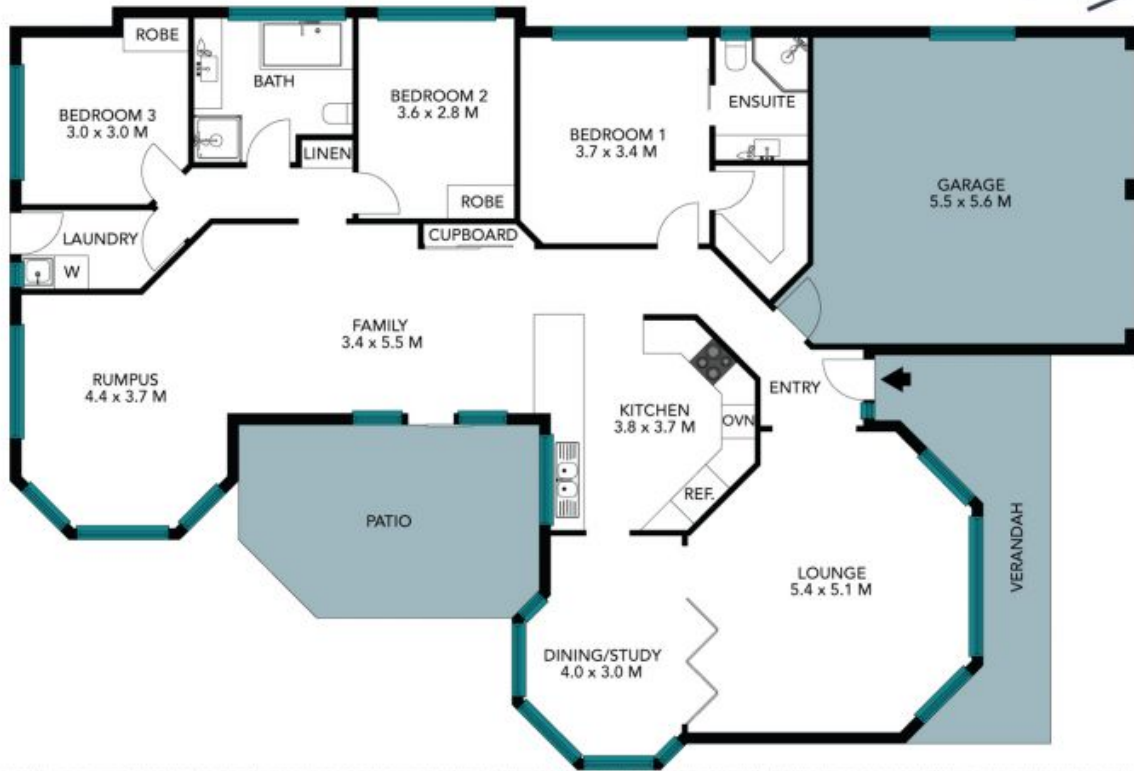


**Isabella McMahon**

0476 266 765

5 Matavia Place  
Bowral

STONE



The floor plan is not to scale, measurements are indicative and in metres. Exterior elements are not in position. Plans should not be relied on. Interested parties should make and rely on their own enquiries. All other information provided has been collected from reliable sources but cannot be guaranteed for accuracy.

5 Matavia Place  
Bowral

STONE



The floor plan is not to scale; measurements are indicative and in metres. All features included in this 3D plan are for inspiration purposes only. This is not an exact replica of the property or the position of exterior elements. Plans should not be relied on. Interested parties should make and rely on their own enquiries.