

2.107/18 Hannah Street Beecroft, NSW

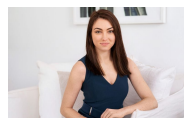


### Ground floor one bedroom garden apartment

Showcasing all the essentials of the ultimate apartment lifestyle, this designer residence is set in the 'Beecroft Place' development. It combines light filled interiors, luxury finishes and an easycare layout to deliver an excellent low-maintenance home.

**Price:** Open Home Cancelled, Deposit Taken

**Available Date:** 20/10/2022



**Sarah Hastings**

02 8893 2218



The floor plan is not to scale. Measurements are indicative and in metres.

2.107/18 Hannah Street, Beecroft  
stonerealestate.com.au

Produced by DIAKRIT



The interior style and design of this floor plan is designed for inspiration purposes to show the living spaces. It is not an exact replica of the furniture and fittings in the home.

2.107/18 Hannah Street, Beecroft  
stonerealestate.com.au

Produced by DIAKRIT