



14 Atherton Road Engadine, NSW

4 

1 

Family haven with relaxing bushland surrounds

Sitting proudly on the high side of the street with peaceful district views, this beautifully presented home showcases contemporary updates throughout, plus a functional floorplan that is perfect for family life. It enjoys the benefits of a quiet cul-de-sac address, while being situated within minutes of schools, village shops, cafes, restaurants, bush trails, buses and Engadine Station.

Price: \$1,363,000
Council Rates: \$412.70 p/q
Water Rates: \$307.52 p/q



Rhys Christofa

0415 684 877

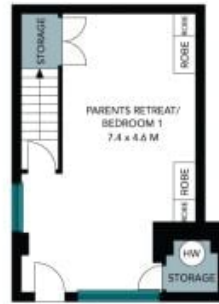


Ezra Malolo

0401 490 024



(NOT IN POSITION)



The site plan and floor plan are not to scale; measurements are indicative and in metres. Bushes and trees are placed for illustration purposes. Plans should not be relied on. Interested parties should make and rely on their own enquiries. All other information provided has been collected from reliable sources but cannot be guaranteed for accuracy.

14 Atherton Road
Engadine



Main Floor



Bottom Floor



The floor plan is not to scale, measurements are indicative and in metres. All features included in this 3D plan are for inspiration purposes only. This is not an exact replica of the property or the position of exterior elements. Plans should not be relied on. Interested parties should make and rely on their own enquiries.